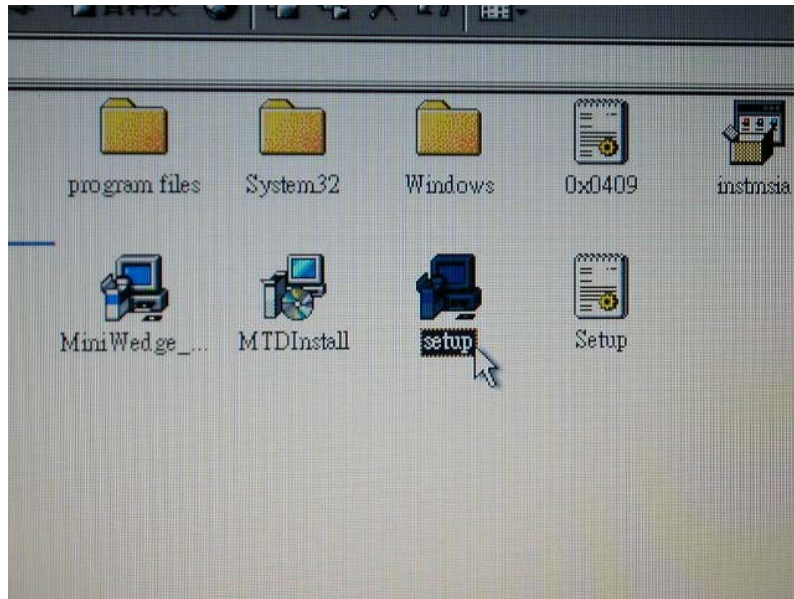
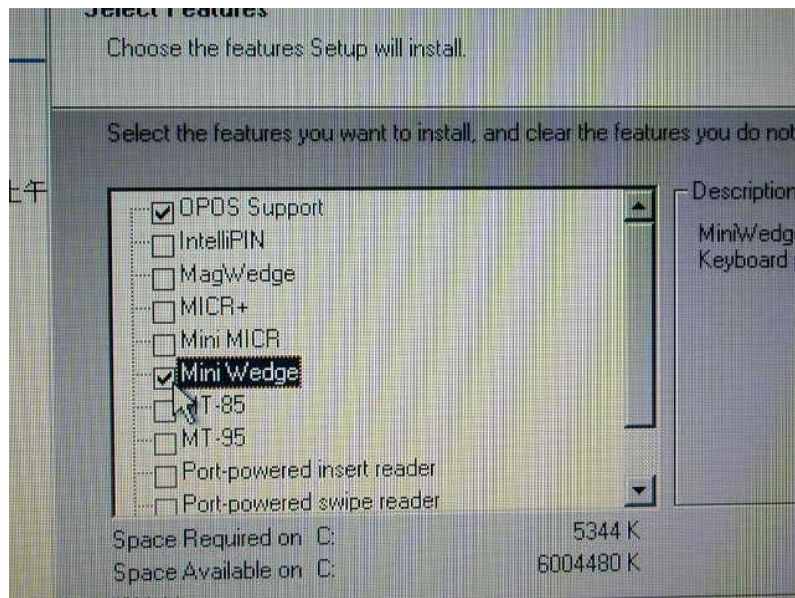


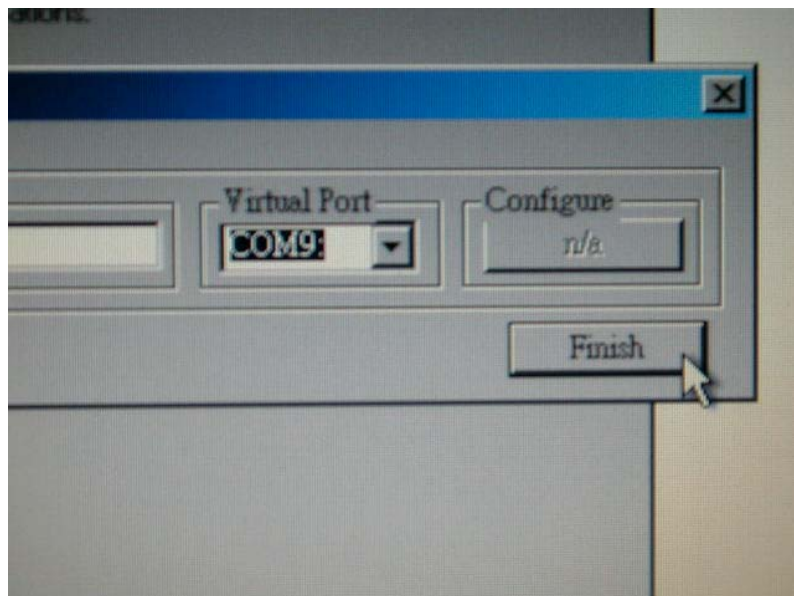
1. Install MagTek MTD Install for Windows 1.12.0050



2. Select MiniWedge



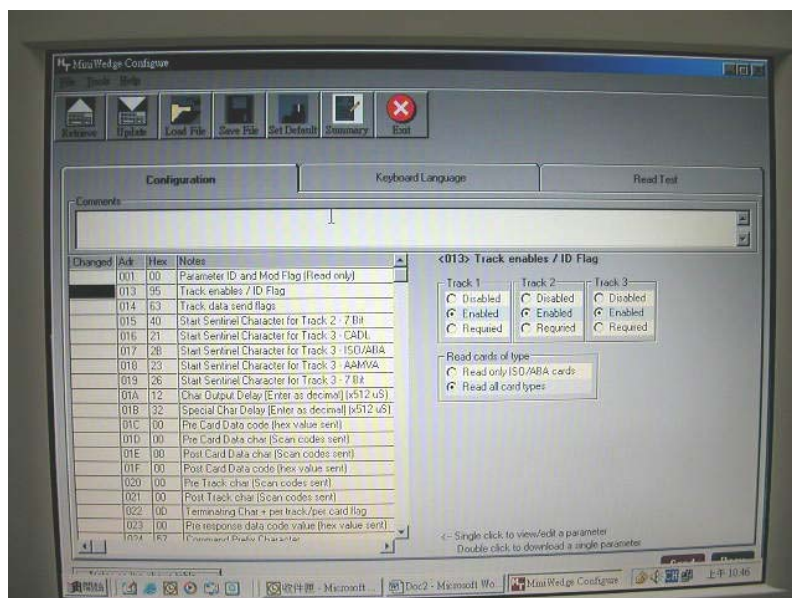
3. Virtual Port set default "COM 9", click finish.



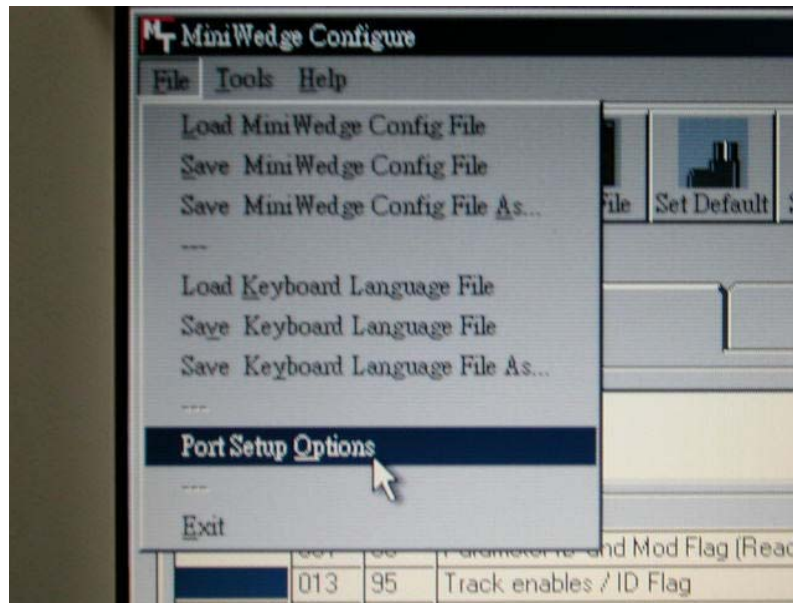
4. Install MagWedge configure / Rev 1.02



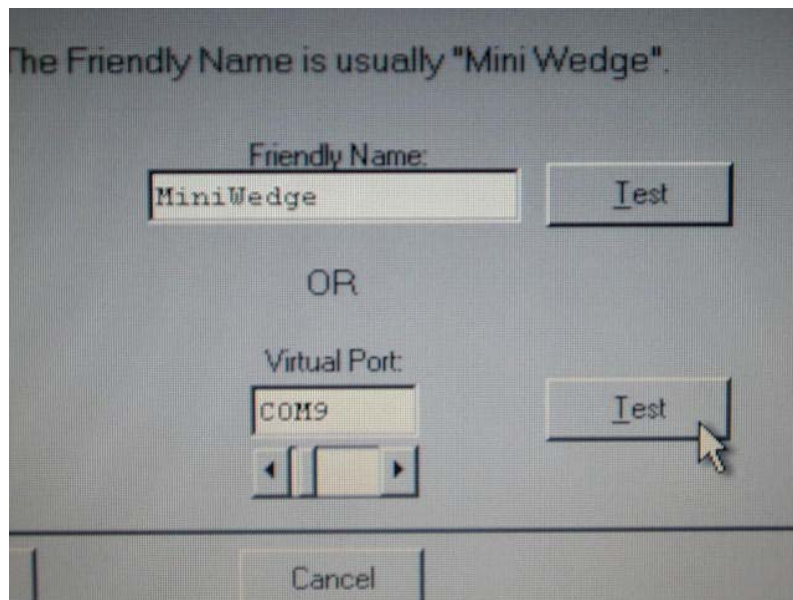
5. Executive



6. File/ Port Setup Option.

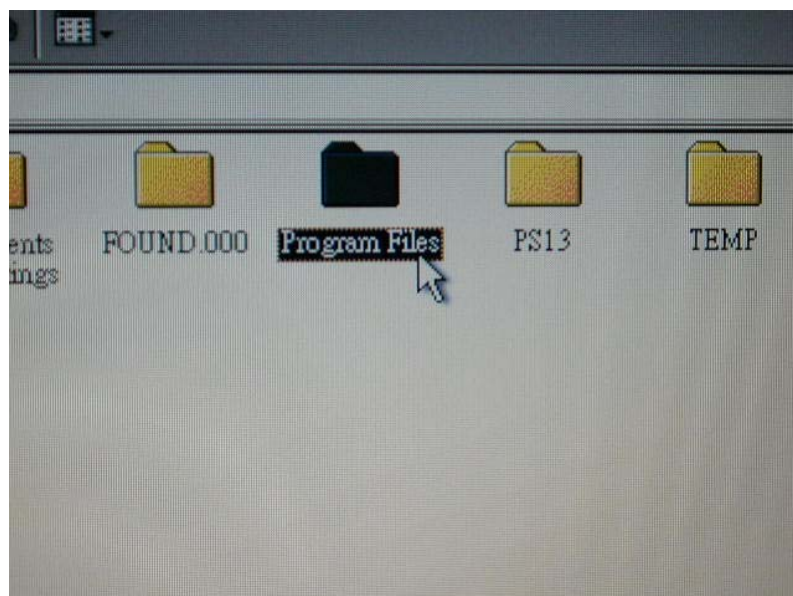


7. Virtual Port should be same with step3

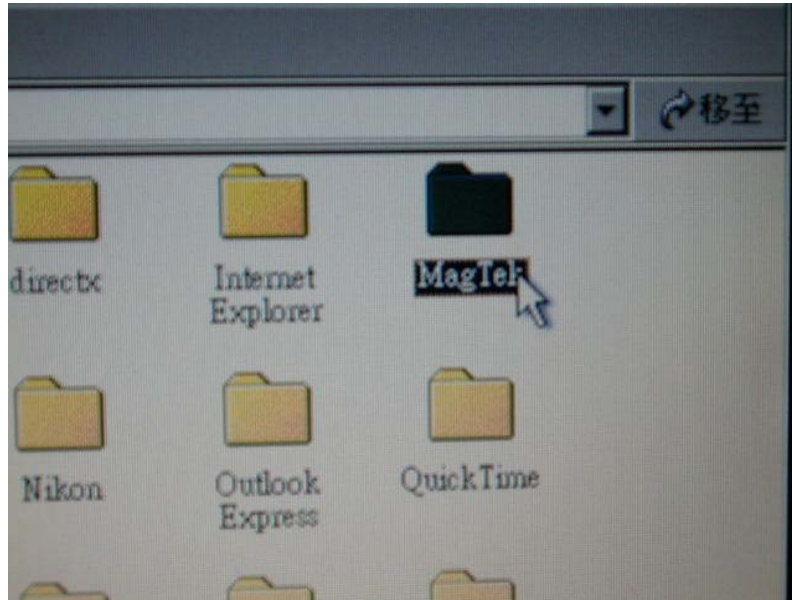


If it is unable to open please follows next steps.

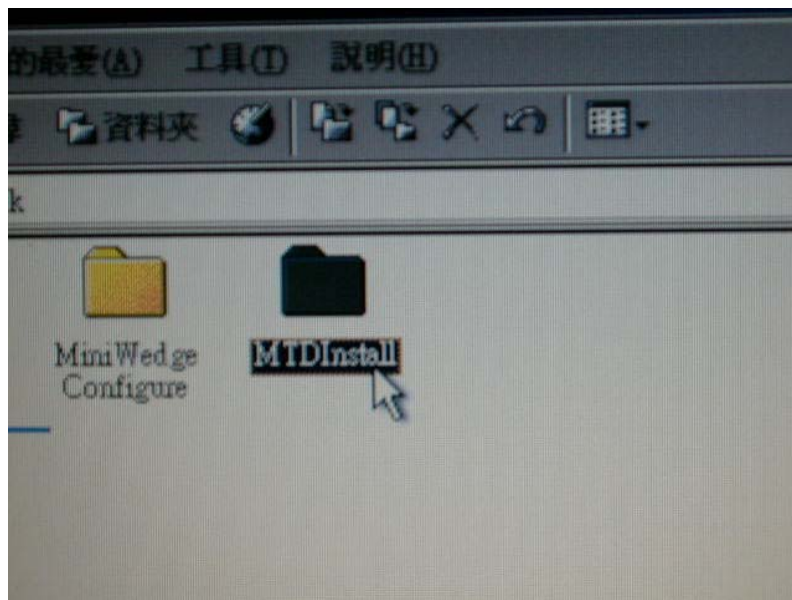
1. Program File



2. MagTek.



3. MTD Install.

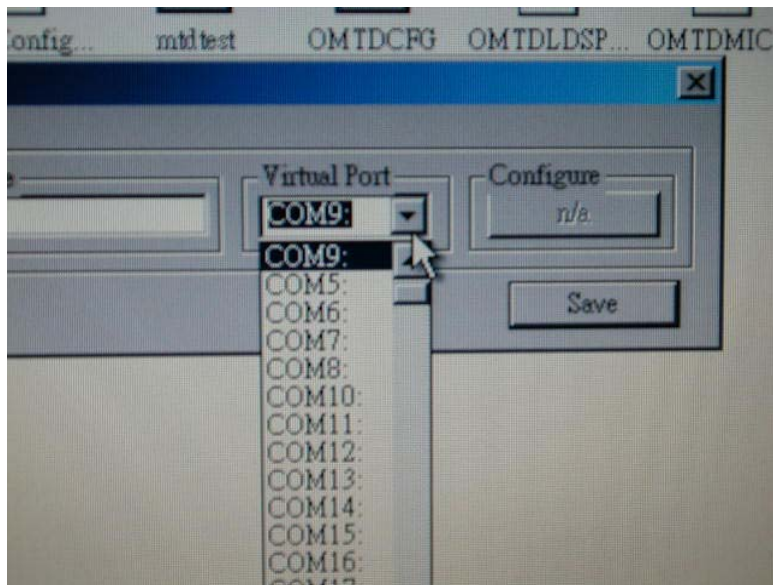


4. ISConfigDigM PC.

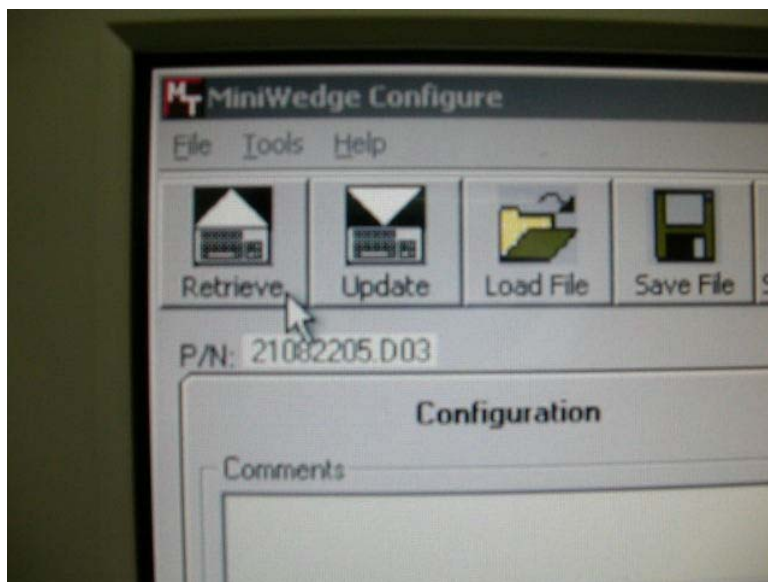


5. Select the other COM.

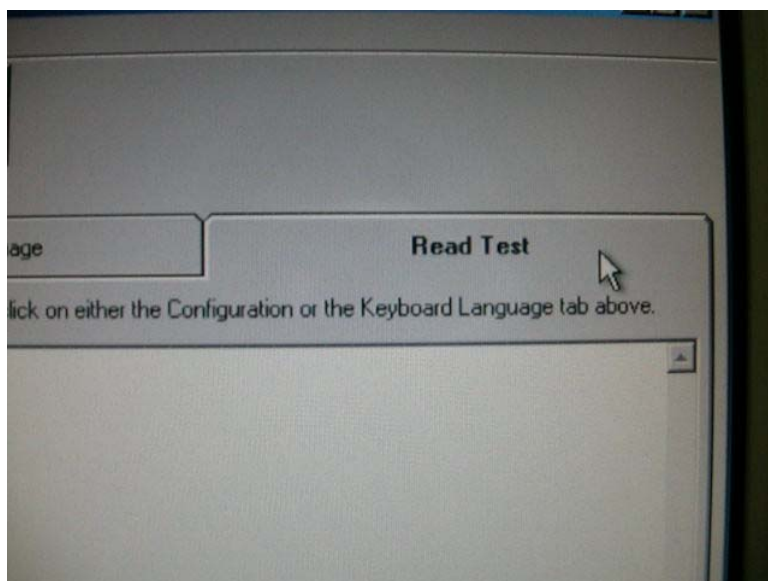
Turn back to the Step 5 and repeat until “able to open”



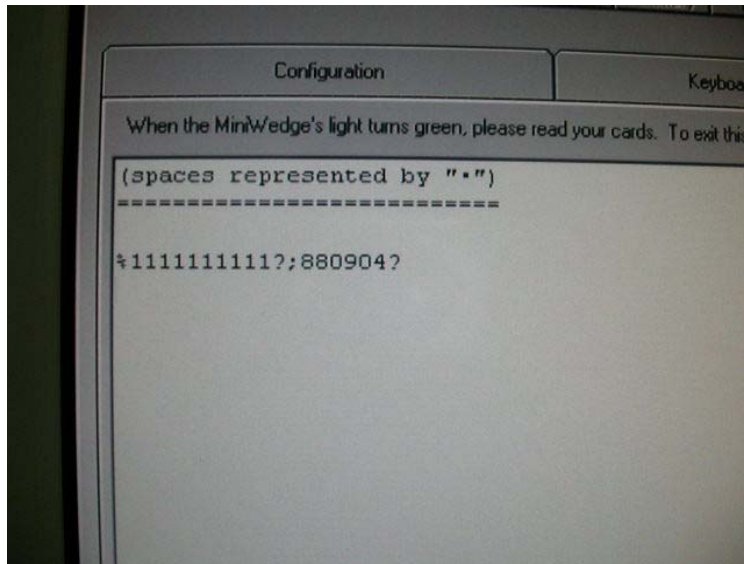
If you succeed to connect the COM port, click “Retrieve”



Select “Read Test”

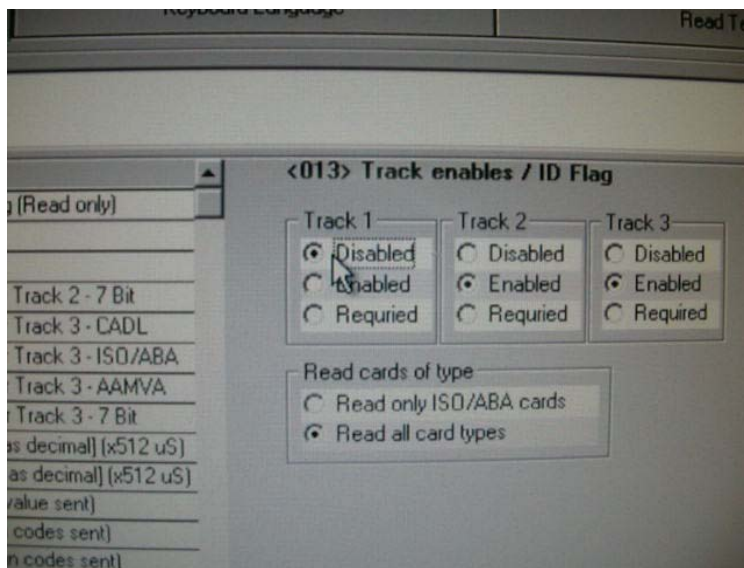


Use card and then you can see the whole messages on the screen.

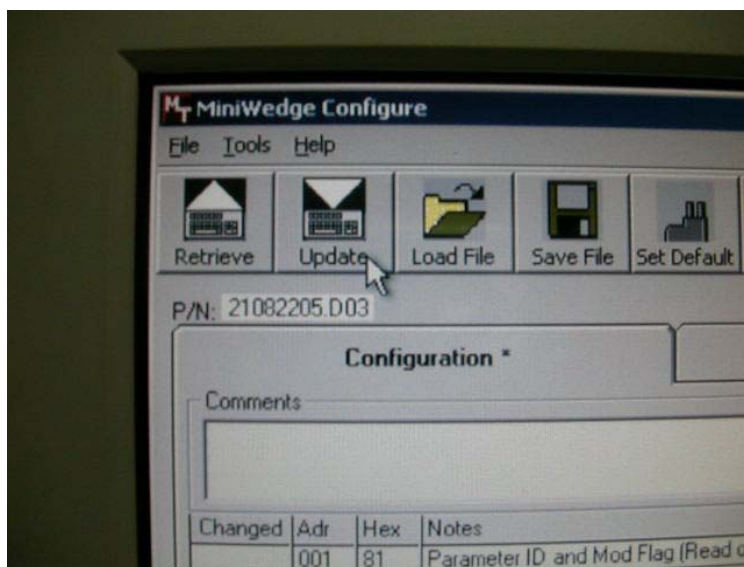


If you would like to disable any track you want, please follow next steps.

1. Select track 1 to disable.



2. Click update.



3. As you can see that the track 1 was disabled

When the MiniWedge's light turns green, please read yo

(spaces represented by ".")

;880904?