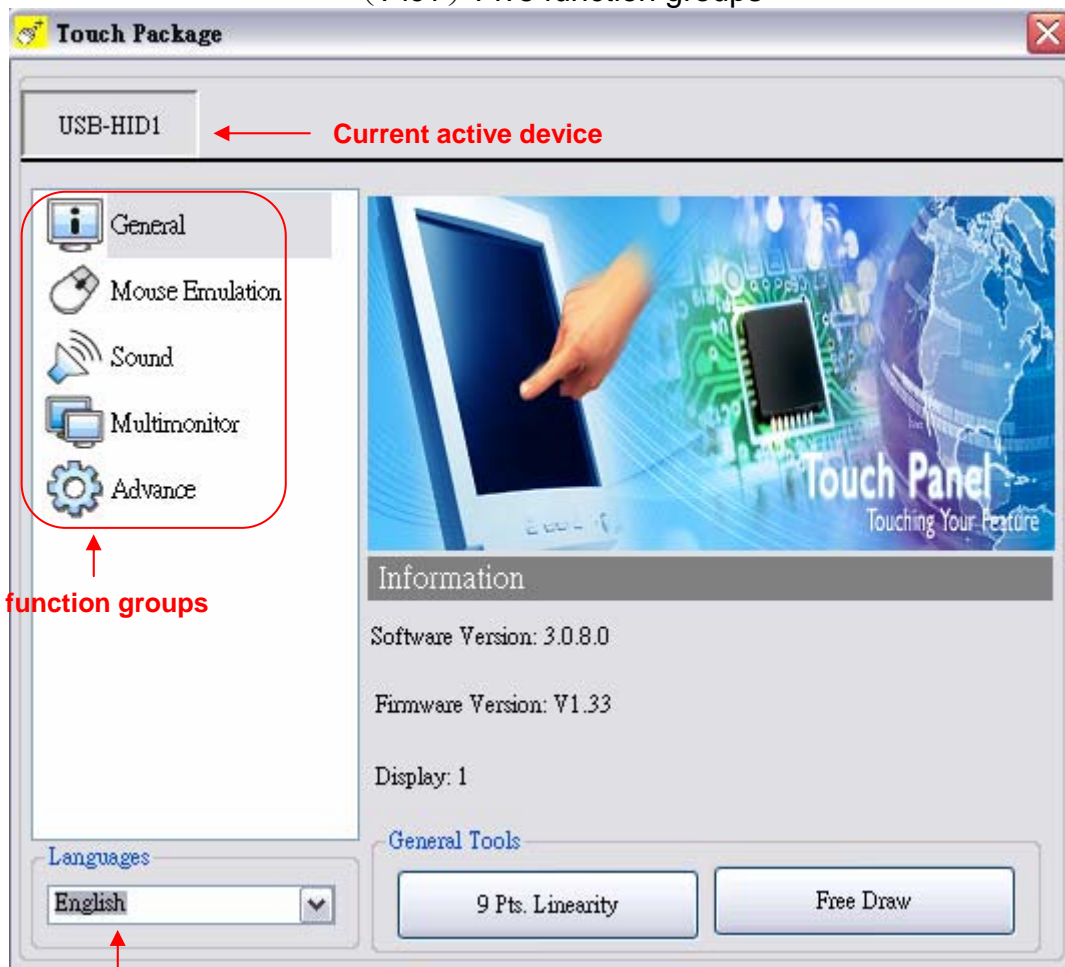


Touch Package User Guide	Model:	COMBO-R5W-3X00C	Rev. No.	Issued Date.	Page.
			3.0	Mar,22, 08	1 / 7

Touch package provides a complete touch control solution including resistive touch panel and optical touch panel. Touch package software is a utility and used for adjusting our touch control devices to optimize our touch solution. Touch package contains 5 function groups (see Pic1). general, sound, mouse, multi-monitor, and Advance. This user guide will explain all of information or parameters in function group order.

( Pic1 ) Five function groups



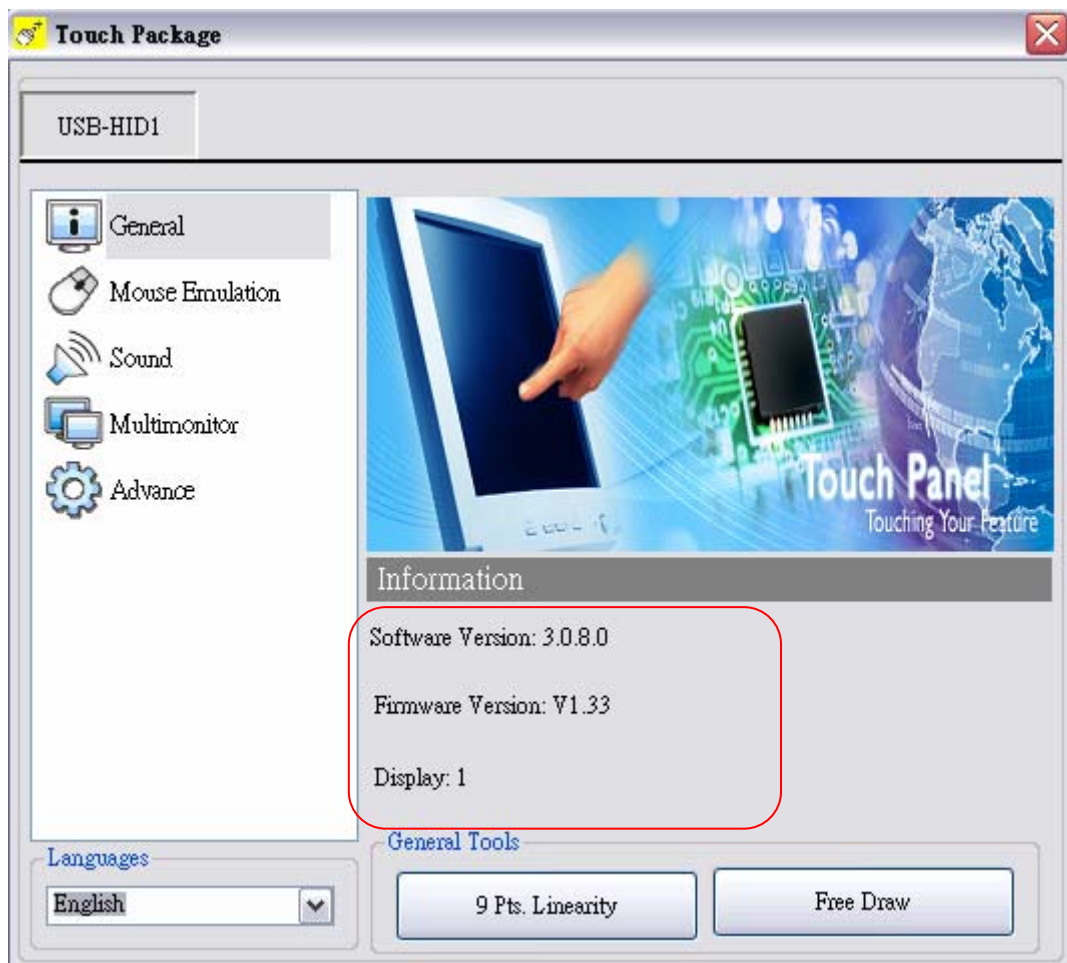
Current language

Touch Package User Guide	Model:	COMBO-R5W-3X00C	Rev. No.	Issued Date.	Page.
			3.0	Mar,22, 08	2 / 7

## 1 、 General page

There are 3 information items and 2 tool function in the general page (see Pic2). The followings is to explain all the items.

1. Utility version : Touchpack.exe version.
2. Firmware version : Our touch controller's code version.
3. Display : This controller is reporting the mouse point to system display number.
4. 9 pts. linearization : This is the linearization way to support customer to made touch device report correct position.
5. Free draw : This is a tool to user to draw mouse point to indicate how precise your touch solution now.



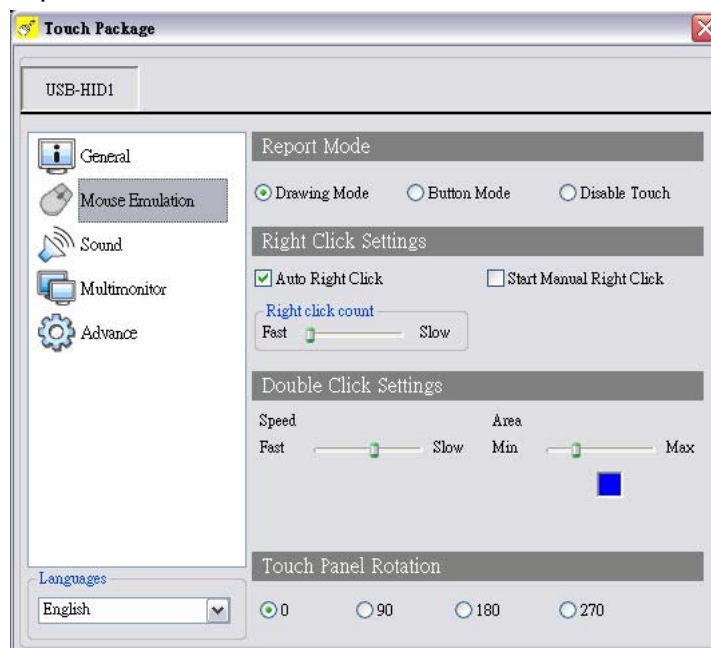
( Pic2 ) general page

Touch Package User Guide	Model:	COMBO-R5W-3X00C	Rev. No.	Issued Date.	Page.
			3.0	Mar,22, 08	3 / 7

## 2、 Mouse page

The mouse page has four main items, report mode, right click settings, double click settings, touch panel rotation ( see Pic3 ) .

1. Report mode item : User can select drawing mode to continue report all points that touch controller senses. Button mode only report two points, first pen down and lift up points. Disable touch will made touch device to not report any point, user must use mouse to return the others to work properly.
2. Right click settings : Our touch solution can generate right click in two ways.
  - I. Auto right click : If you pen down and no move for a while, touch device will generate right click event automatically.
  - II. Manual right click : User launch the “Start manual right click” button and touch solution will show a right click window at the right-bottom corner. If user want to generate a right click, user can hit this window once and then pen down and lift to have a right click.
3. Double click settings : These two parameters, speed and area, are used to change Windows OS parameters about generating double click conditions. The bottom of these two shows the test area and user can click to test the settings to feel your settings best.
4. Touch Panel Rotation : Cooperate with the picture of the display to rotate, touching and accusing of the function needs and then rotating too, very whirling angle is at present : 0° ( Default ) 、 90° 、 180° 、 270° .



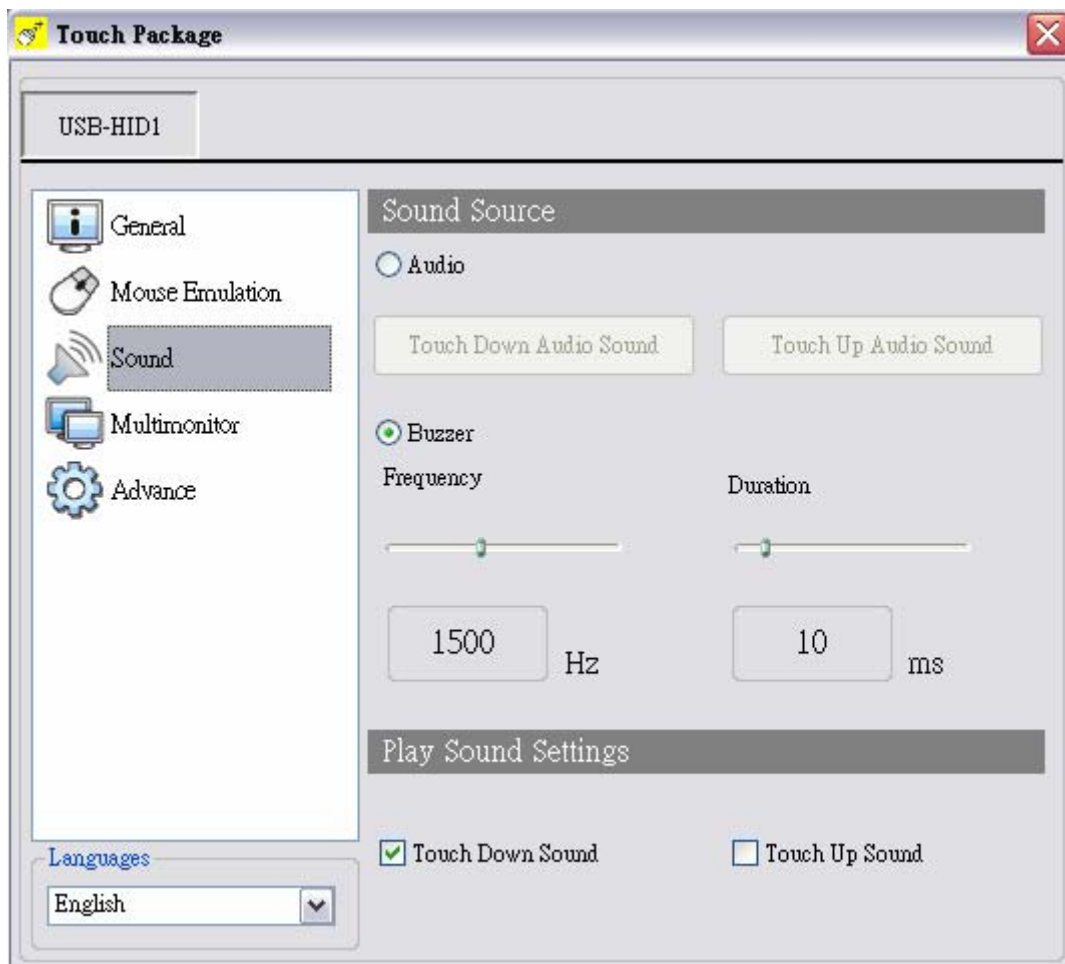
( Pic3 ) Mouse page

Touch Package User Guide	Model:	COMBO-R5W-3X00C	Rev. No.	Issued Date.	Page.
			3.0	Mar,22, 08	4 / 7

### 3、 Sound page

The sound page supports user to set the items about sound settings (see Pic4).

1. Sound source : There are two sound sources, audio sound and buzzer sound. So, user can choice audio or buzzer radio button. If user selects buzzer mode, user can also adjust the frequency and duration to play the sound you like.
2. Play sound settings : User can check first pen down to play sound or/and pen up to play sound. If both uncheck, it means that no sound to play.

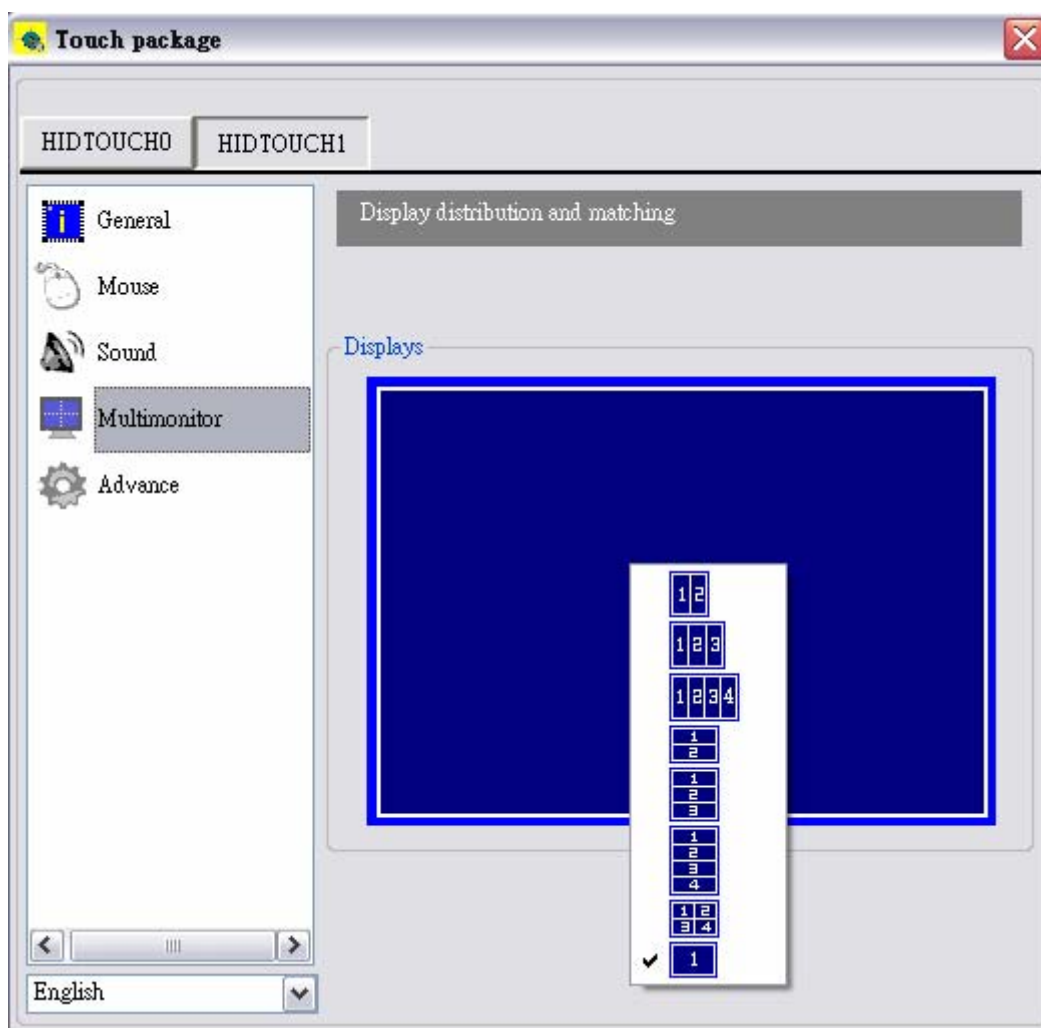


( Pic4 ) Sound page

Touch Package User Guide	Model:	COMBO-R5W-3X00C	Rev. No.	Issued Date.	Page.
			3.0	Mar,22, 08	5 / 7

#### 4、 Multi-monitor page

This page function can be supported on the versions, Windows 2K, XP, and Vista. The multi-monitor page shows the system display distribution in time. It also supports split display to fit some VGA cards. User can right click to pull down the split display type to match your VGA card (see Pic 5) and then the page will show your settings. User can click display area to show a matching program to link the relation between touch device and display.



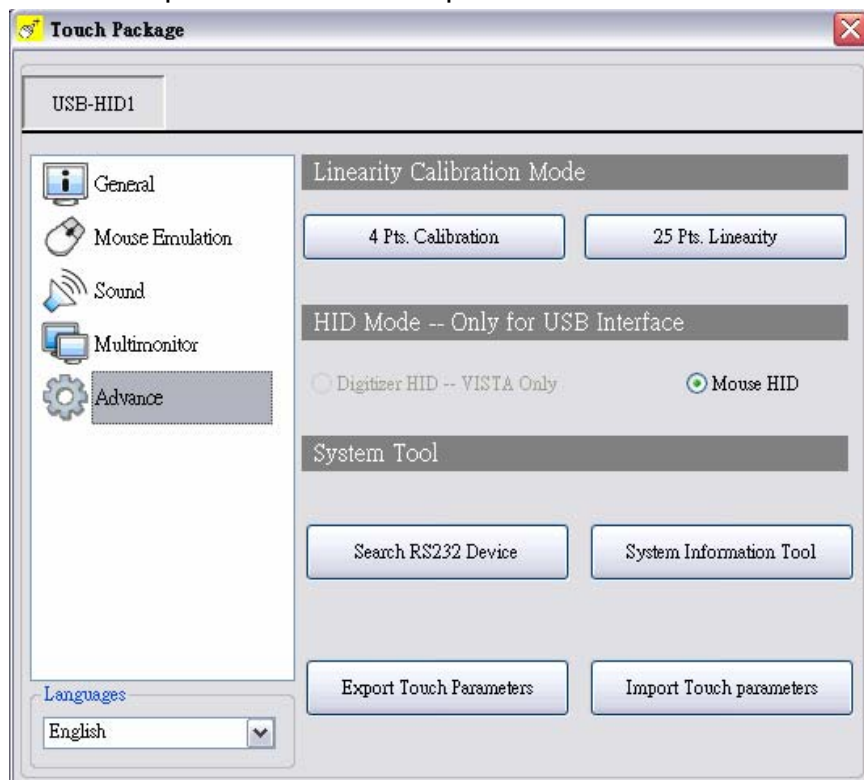
( Pic5 ) Multi-monitor page

Touch Package User Guide	Model:	COMBO-R5W-3X00C	Rev. No.	Issued Date.	Page.
			3.0	Mar,22, 08	6 / 7

## 5 、 Advance page

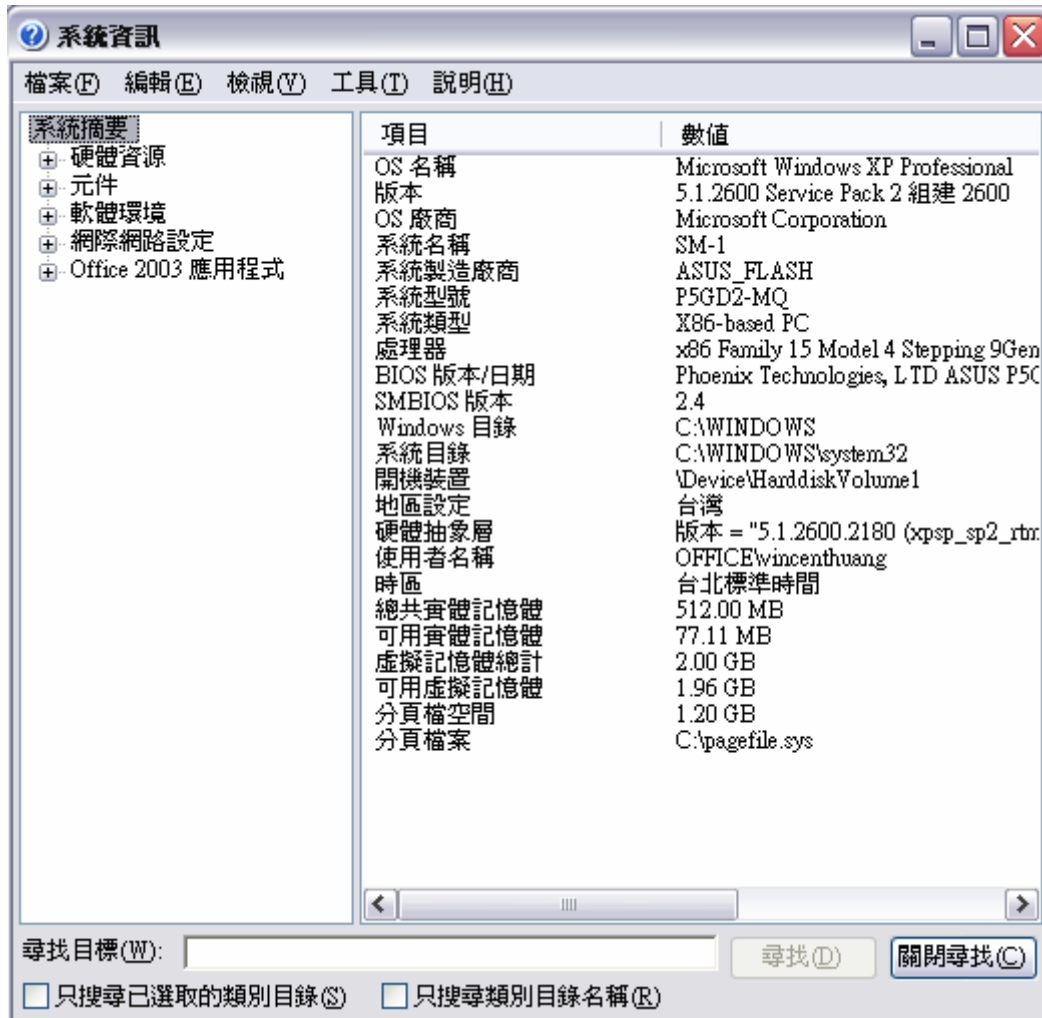
In the advance page (see Pic6), there are three main item functions, Linearization, HID mode, and system tools.

1. Linearization : Some kind of touch sensor, special in 5-wires resistive sensor, need 9 points or 25 points reference points to precisely positioning. User can use the “4 pts calibration” tool or “25 pts linearization” to enhance your touch sensor.
2. HID mode : We support the digitizer HID mode for windows vista. This mode can operate gesture functions provided by windows vista home advance and upper. The mouse HID can work on any windows series versions. So, the touch device is default on the mouse HID mode.
3. System tools : The “search Rs232 device” button is used for search our none-plug and play RS232 device. The “system information tool” button will launch user’s installation computer information (see Pic7) to provide some information for analysis engineer to trace system problems. The “Download touch param.” button provides user a tool to gather touch device’s parameters into a file and send to manufacture engineer to analysis when user meet some problems. If manufacture engineer find any wrong, he can fix and save as the other file and send back user. User can use the “Write touch param.” button to open above file and write into his touch device.



( Pic6 ) Advance page

Touch Package User Guide	Model:	COMBO-R5W-3X00C	Rev. No.	Issued Date.	Page.
			3.0	Mar,22, 08	7 / 7



( Pic7 ) system information

We appreciate your choice to use our product and hope you enjoy using our product.