

# EPSON<sup>®</sup> TM-H6000II



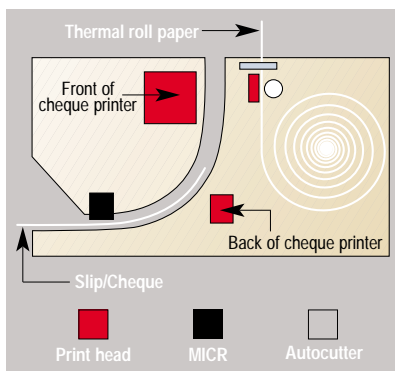
## *Ultra-fast receipt and cheque printer*

- Ultra-fast colour thermal receipt printing (54 lps)
- 12-sec cheque printing and validation
- Jam-free cheque handling
- Advanced colour graphics and barcode printing
- Elegant and compact
- Interchangeable interfaces
- Euro-ready, OPoS compliant



*Combining the fastest receipt printing, cheque printing and validation, our PoS printer in the world. It offers unenhance your customer interface.*

Our latest PoS printer - the TM-H6000II - is not easy to describe in a single word. But "ultimate" springs to mind. That's because it's so advanced, it's capable of enhancing your Point of Sale in ways which, previously, only existed in the imagination. Its staggering speed, for example, will take your receipts into a new dimension of presentation, while its revolutionary single-pass cheque printing mechanism makes cheque handling faster and easier than ever before. Demonstrably the most reliable printer in the world, the TM-H6000II is also totally open, Euro-ready, exceptionally easy to maintain and immensely flexible.



*Three print head design*

- Instant delivery of customised receipts
- Fast, jam-free cheque printing and authorisation
- Multi-part slip printing
- Drop-in paper load
- OPoS support
- Serial/parallel/USB and ethernet interfaces

### *Incredible speed*

With a thermal receipt printing speed of 54 lps, the Epson TM-H6000II is quite simply the fastest printer in the world. This ultra-fast printing means virtually instant delivery of highly customised colour receipts which include high quality graphics, such as logos and promotional messages. It has a digital memory too, so if you use a particular graphic regularly, it's even faster. With the TM-H6000II you'll change your receipts from a necessary evil to a powerful, "live" medium for communicating with your customers and enhancing your brand.

### *Unique cheque-printing mechanism*

The TM-H6000II's unique cheque printing mechanism not only doubles cheque processing speed, compared with conventional mechanisms, but also virtually eliminates paper jams. This is because it uses two print-heads - not one, as with conventional mechanisms - to print on both sides of the cheque within a single pass. This means, in as little as 12 seconds, cheques can be printed and endorsed. It's fast, it's simple, and, because there's no need to flip the cheque, it's virtually error-free - even when presented with cheques which have been folded or crumpled.

### *Elegant but r*

Designed to occupy space (186mm x 2 is demonstrably th printer in the indu reliability is further product's build qu which provides lon against mechanical minimises downtim features - again, u counters which au usage in terms of number of charact of paper cuts, etc. identify heavily us preventative main



*Easy drop-in paper*

ng in the world with single-pass

TM-H6000II is the most advanced

paralleled opportunities to

reliable

by minimal counter (98mm), the TM-H6000II is the most reliable PoS in the industry. This superb printer is enhanced by the reliability and metal chassis, long-term insurance against wear and tear, and more. The product also uniquely - maintenance automatically record power-on hours, meters printed and number. So you can easily upgrade units and deploy maintenance programmes.

### Euro-ready, totally open

Fully Euro-ready, and featuring a stylish and ergonomic design, the TM-H6000II also offers a number of other advanced features such as sophisticated cable management, native support for barcodes and a single-action, drop-in paper-load. It's truly open too, with support for OPoS and JPoS, plus a modular interface design, so that upgrades or changes (between serial, parallel and USB) can be made quickly and cost-effectively.

Graphics / Logo



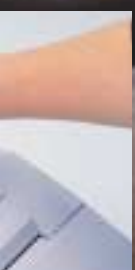
Euro ready

Special offers

Barcodes



Customised receipt with advanced graphics



load

- Receipt MCBF: 52 million lines
- Slip MCBF: 18 million lines
- Ribbon life: 6 million characters
- Autocutter life: 1.5 million cuts
- Robust metal chassis
- Automatic maintenance counters

# EPSON™ TM-H6000II

## Specifications

### Receipt

#### Print Method

- Thermal colour line printing

#### Print Font

- 9 x 17/ 12 x 24
- Column capacity 56/42 columns
- Character size 0.99(W) x 2.4(H) / 1.41(W) x 3.39(H) mm
- Character set 95 Alphanumeric  
37 International  
128 x 8 Graphic

#### Print Speed

- 54 lps (170 mm/sec)

#### Paper Dimensions

- Thermal roll paper 79.5 ± 0.5 dia 83.0 mm

#### Paper Thickness

- 0.06 to 0.09 mm

#### Current Consumption

- Approx 1.8A (mean)

#### Reliability

- MTBF 36 x 10<sup>4</sup> hours
- MCBF 52 x 10<sup>6</sup> lines

### Slip

#### Print Method

- 9-pin serial impact dot matrix

#### Print Font

- 5 x 9 / 7 x 9
- Column capacity 45 / 60 columns
- Character size 1.24(W) x 3.1(H) / 1.56(W) x 3.1(H) mm
- Character set 95 Alphanumeric  
37 International  
128 x 8 Graphic

#### Print Speed

- 5.14 lps (approx.)

#### Paper Dimensions

- 70(W) x 150(L) to 148(W) x 210(L) mm

#### Paper Thickness

- 0.09 to 0.31 mm

#### Current Consumption

- 1.8 A (mean)

#### Reliability

- MTBF 18 x 10<sup>4</sup> hours
- MCBF 18 x 10<sup>6</sup> lines

#### Copy Capability

- One original and three copies

#### Inked Ribbon

- ERC-32 (purple)

#### Ribbon Life

- 6 x 10<sup>6</sup> characters (purple)

### Endorsement Printer

#### Print Method

- 8-pin shuttle impact dot matrix

#### Print Font

- 5 x 7
- Column capacity 40 columns
- Character size 1.1(W) x 2.52(H) mm
- Character set 95 Alphanumeric  
37 International

#### Print Speed

- 1.9 lps (approx.)

#### Paper Dimensions

- 70(W) x 150(L) to 148(W) x 210(L) mm

#### Paper Thickness

- 0.09 to 0.2 mm

#### Current Consumption

- 1.8 A (mean)

#### Copy Capability

- One original single-ply

#### Inked Ribbon

- ERC-41 (purple)

#### Ribbon Life

- 1 x 10<sup>6</sup> characters (purple)

### General

#### D.K.D. Function

- 2 drivers

#### Overall Dimensions

- 186(W) x 298(D) x 185(H) mm

#### Weight

- Approx 5.8 kg

#### EMI Standards

- VCC1 class A, FCC class A, CE marking

#### Safety Standards

- UL, C-UL, TÜV

#### Data Buffer

- 4K bytes / 45 bytes
- 384k NVRAM

#### Interface

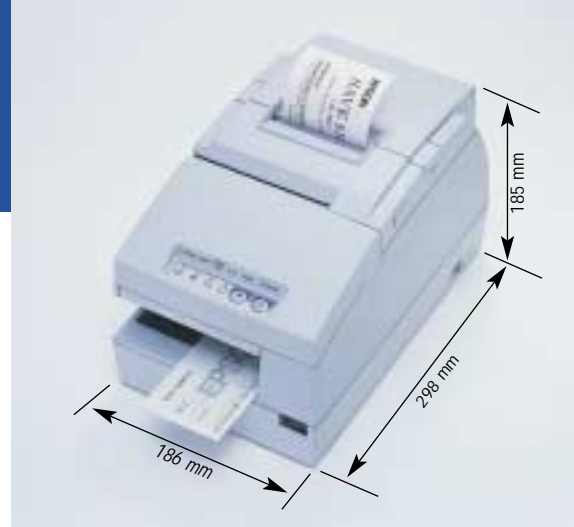
- RS-232C / Bi-directional parallel / RS-485 / USB / Ethernet

#### Power

- 24 VDC ± 10%

#### Power supply

- PS170 / PS180



#### EPSON (UK) Ltd

Campus 100, Maylands Avenue,  
Hemel Hempstead, Hertfordshire HP2 7TJ  
Telephone: +44 (0) 1442 227 222  
Fax: +44 (0) 1442 227 244  
E-mail: retailpos@epson.co.uk  
Web: www.pos.epson.co.uk

Specification subject to change.  
All manufacturers trademarks acknowledged.

## ESC/POS®



Your Epson TM-H6000II supplier is:

**EPSON**  
Technology for Retail