
Samsung SRP-350 Thermal Receipt Printer

Integrator's Manual

Contents

Driver Installation Information	2
Overview	2
Windows 98 SRP-350 Driver Installation	3
Windows 98 Generic / Text Driver Settings	4
Windows 2000 Generic / Text Driver Settings.....	5
Windows XP Generic / Text Driver Settings	6
Logo Setup	7
Design & Save Bitmap in Microsoft Paint	7
Download Bitmap to SRP-350 from a PC.....	8
Upgrade Instructions	10
Downloading Procedure for SRP-350 Printer Software.....	10
Hexadecimal Dumping	11
Overview	11
Hexadecimal Dump Sample Printout.....	12
Troubleshooting	13
Cash Drawer	14
Generate Pulse Command	14
Connection Information	15
Wall Mount Option	16
Downloading Procedure for SRP-350 Wall Mount Printer Software	16
Special Application Firmware	16
Overview	17

CRS, Inc.

2909 Anthony Lane
Minneapolis, MN 55418
(612) 781-3474

Driver Installation Information

Overview

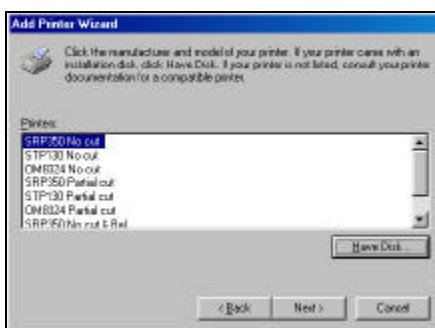
If your POS software requires a generic printer driver, you must make the appropriate driver settings for auto cut and cash drawer opening.

If you are using one of the SRP-350 drivers the generic driver settings shown here do not apply. The appropriate SRP-350 drivers operate the cutter and cash drawer automatically.

Windows 98 SRP-350 Driver Installation

You can download the compressed SRP-350 driver, 350_130_2K.zip, from the dealer area of the CRS site, www.crs-usa.com. Unzip (extract) the file SRP350.drv.

1. Select **Start**, then **Settings**, and then **Printers**.
2. From the printers dialog, right click the **Add Printer** icon.
3. From the Add Printer wizard window, click **Next**.
4. Choose **Local Printer**, click **Next**.
5. Click the **Have Disk** command button. From the Install From Disk dialog box, click the **Browse** button to locate the driver file SRP350.drv. Click **OK**. The wizard displays the list of available drivers for the SRP-350.



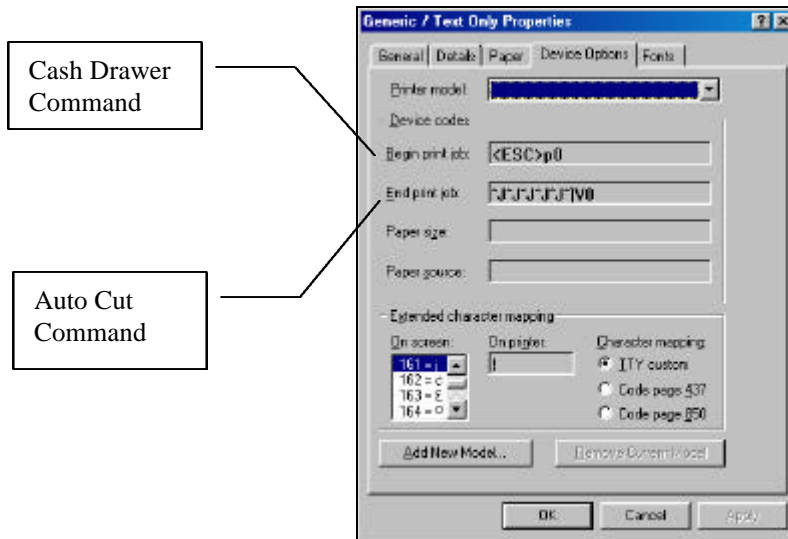
6. Select a driver from the table that follows and click **Next**.

Driver	Description
SRP350 No cut	Use with SRP350 – no paper cut
STP130 No cut	Do not use
OM8324 No cut	Do not use
SRP350 Partial cut	Use with SRP350 – partial paper cut
STP130 Partial cut	Do not use
OM8324 Partial cut	Do not use
SRP350 No cut & Bel	Use with SRP350 – no paper cut and sounds auto paper beep when data is sent to printer – requires version 1.19B EPROM installed in SRP350.
SRP350 Partial cut & Bel	Use with SRP350 – partial paper cut and sounds auto paper beep when data is sent to printer – requires version 1.19B EPROM installed in SRP350.

7. Select the port to which the printer will be connected and click **Next**.
8. Enter a printer name and select whether you want your windows based program to use this printer as the default printer. Click **Next**.
9. Select whether you wish to print a test page and click **Finish**. The printer driver installation is complete.

Windows 98 Generic / Text Driver Settings

1. Select **Start**, then **Settings**, and then **Printers**.
2. From the printers dialog, right click the **Generic / Text Only** driver and choose **Properties**.
3. From the Generic / Text Only dialog box, click the **Device Options** tab:

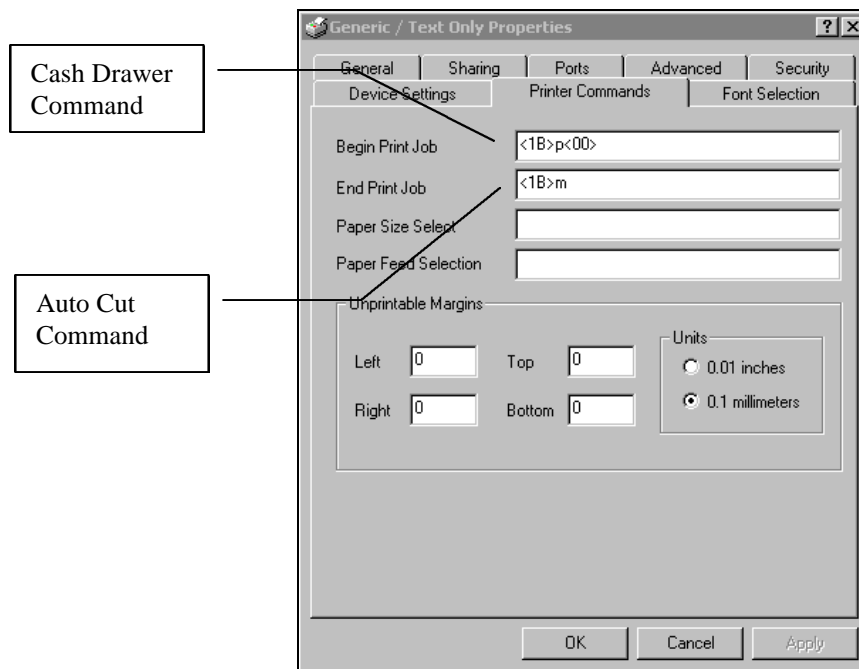


4. For the cash drawer command, in the **Begin Print Job** field:
 - Type: ESC (<ESC> will display)
 - Type: p (lower case)
 - Type: 0 (drawer 1) *or* 1 (drawer 2)
 - Type: 25 (on time)
 - Type: 125 (off time)
5. For the auto cut command, in the **End print Job** field:
 - Press ALT and type: 0010 (line feed) :
 - Press ALT and type: 0010 (line feed) :
 - Press ALT and type: 0010 (line feed) :
 - Press ALT and type: 0010 (line feed) :
 - Press ALT and type: 0010 (line feed)
 - Press ALT and type: 0029 (GS) :
 - Press ALT and type: 0086 (V) :
 - Press ALT and type: 0001 (ASCII 01)
6. Click **OK** to save the new settings.

NOTE:
To enter these commands, it may be necessary to activate the Num Lock and use the 10-key pad on your keyboard.

Windows 2000 Generic / Text Driver Settings

1. Click the **Start** button, and then choose **Settings**, and then choose **Printers**.
2. From the printers dialog, right click the **Generic / Text Only** driver and choose **Properties**.
3. From the Generic / Text Only dialog box, click the **Printer Commands** tab:

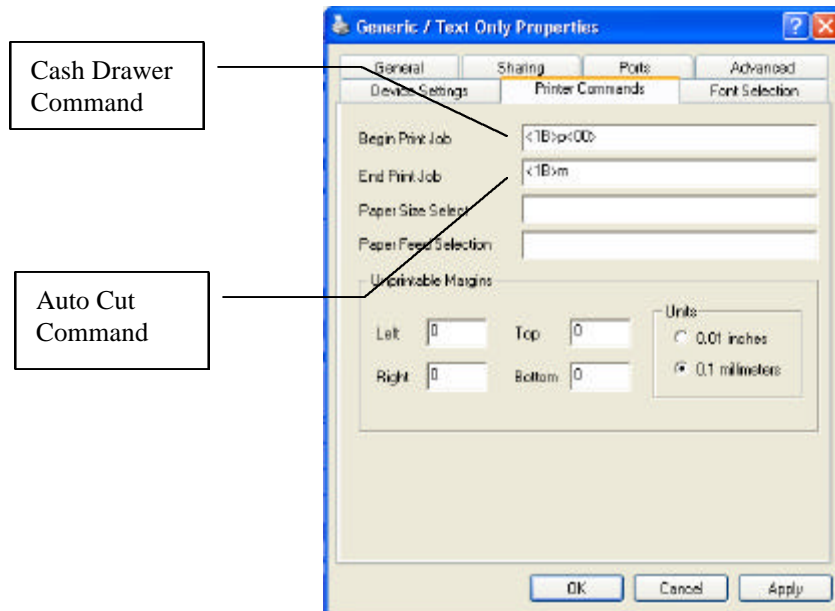


4. For the cash drawer command, in the **Begin Print Job** field:
Type: “<1B>p<00>”
5. For the auto cut command, in the **End print Job** field:
Type: “<1B>m”
6. Click **OK** to save the new settings.

NOTE:
To enter these commands, it may be necessary to activate the Num Lock and use the 10-key pad on your keyboard.

Windows XP Generic / Text Driver Settings

1. Click the **Start** button, and then choose **Printers and Faxes**.
2. From the printers dialog, right click the **Generic / Text Only** driver and choose **Properties**.
3. From the Generic / Text Only dialog box, click the **Printer Commands** tab:



4. For the cash drawer command, in the **Begin Print Job** field:
Type: “<1B>p<00>”
5. For the auto cut command, in the **End print Job** field:
Type: “<1B>m”
6. Click **OK** to save the new settings.

NOTE:
To enter these commands, it may be necessary to activate the Num Lock and use the 10-key pad on your keyboard.

Logo Setup

Design & Save Bitmap in Microsoft Paint

Maximum horizontal pixels = 512.

1. Set Bit Map size:
 - Select IMAGE
 - Select ATTRIBUTES
 - Set Units = PELS
 - Set Colors = Black and White
 - Enter the width and height of the bit map. Values must be in multiples of 8 (per above Bit Map file specifications).
2. Design the Bit Map Image.
3. Prior to saving the Bit Map Image:
 - Select IMAGE
 - Select INVERT COLORSThen:
 - Select IMAGE
 - Select FLIP/ROTATE
 - Select ROTATE BY ANGLE
 - Select 90 DEGREES repeat two more times to obtain a rotation of 270 degrees in total.
4. Save the Bit Map Image.

Example: Image To Print (Created In Paint Brush)



Image As Saved



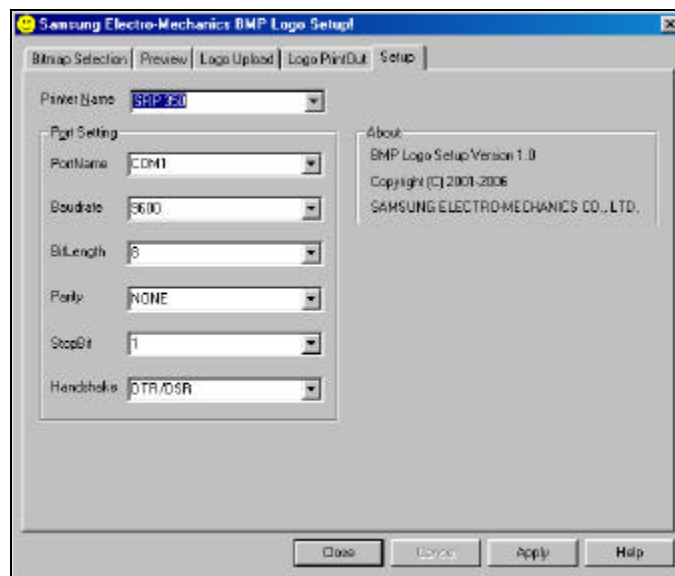
Download Bitmap to SRP-350 from a PC

The Windows application program BmpLogo.exe is used to send a bitmap to the flash ROM of the SRP-350 POS printer.

The application is available from the dealer area of the CRS web site, www.crs-usa.com.

This program will work with Windows 95\98, and Windows 2000 (only with file system FAT32). In Parallel mode, the program will only work in bi-directional\EPP mode. The program will not work in ECP mode. This mode can be changed in CMOS.

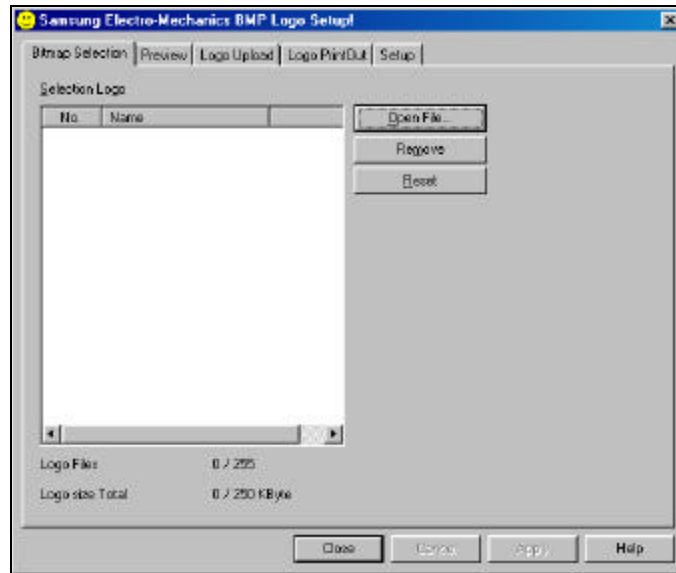
1. Start the BmpLogo application. (Click **Start**, and then **Run**. Type the path and program name into the Open field; click **OK**. Alternatively you can launch the application by double-clicking on the file in Windows Explorer.) The application displays with the **Setup** tab in the forefront.



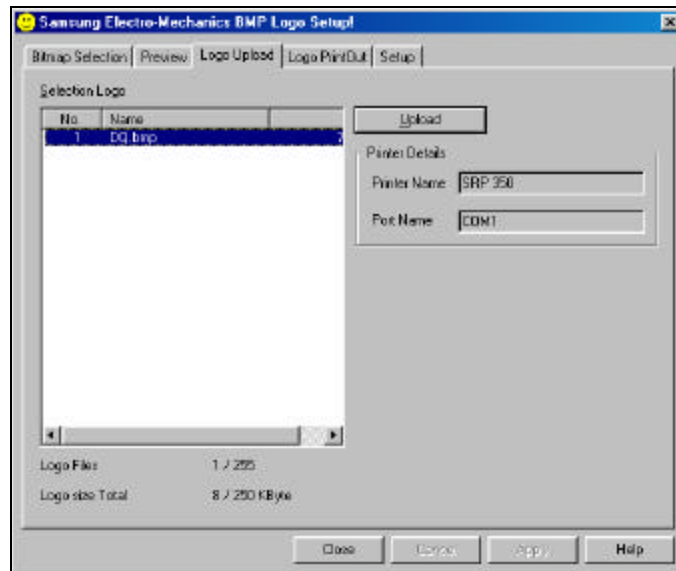
2. Select the port to which the SRP350 is connected, and then fill the remaining fields to match the settings on the SRP350. Use the table below as a guide:

Option	BmpLogo Program Setting	SRP350 Dip Switch Setting
Baud rate	9600	SW1 #7=ON; #8=OFF
Bit length	8	SW1 #4=OFF
Parity	NONE	SW1 #5=OFF
Stop Bit	1	SW1 #6=OFF
Handshake	DTR/DSR	SW1 #3=OFF

3. Click the **Bitmap Selection** tab.



4. Click the **Open File** command button. Select the path and document name of the bitmap file you wish to upload to the SRP350 printer.
5. Click the **Logo Upload** tab.



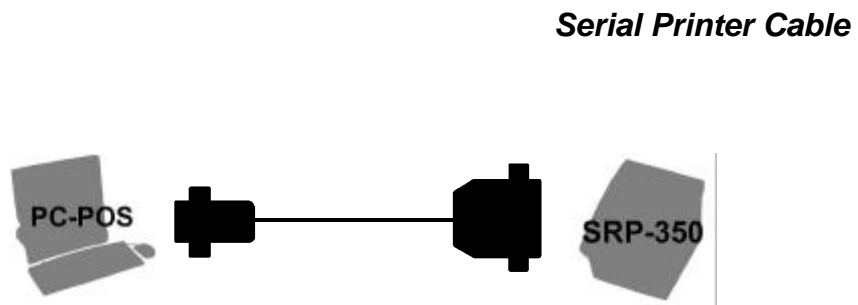
6. Select the bitmap file you wish to upload and click the **Upload** command button.
7. Click **Close** to exit the program.

Upgrade Instructions

Downloading Procedure for SRP-350 Printer Software

1. Turn off the printer.
2. Set the SW2 DIP switch 2-3 to **ON** position.
3. Connect the printer to PC with a standard Parallel cable. If using a serial connection, use the cable described below.
4. Open the printer cover.
5. Press the paper feed key and turn on the printer while holding down the feed key.
6. Execute the 350load.exe. You must input the number for type of interface, **3** for parallel (lpt1) downloading.
7. Enter the binary file name you want to download. Example: 350v120.bin.
8. You should see download status scroll on your PC screen.
9. Download complete.
10. Turn off printer and set SW2 DIP switch 2-3 to **OFF** position.
11. Turn on printer and check version and operation.

PC DB-9F		Printer DB-25M	
DCD	1	1	NC
RXD	2	2	TXD
TXD	3	3	RXD
DTR	4	4	RTS
GND	5	5	CTS
DSR	6	6	DSR
RTS	7	7	GND
CTS	8	8	CD
VCC	9	20	DTR
		22	



CRS Part No. 250030

Hexadecimal Dumping

Overview

This feature allows experienced users to see exactly what data is coming to the printer. This can be useful in finding software problems. When you turn on the hexadecimal dump function, the printer prints all commands and data in hexadecimal format along with a guide section to help you find specific commands.

SRP-350 Hexadecimal Dump

To use the hexadecimal dump function, follow these steps:

1. After you make sure that the printer is off, open the cover.
2. Turn on the printer while holding down the feed button.
3. Close the cover. The printer is in the hexadecimal dump mode.
4. Run any software program that sends data to the printer. The printer will print all the codes it receives in a two-column format. The first column contains the hexadecimal codes and the second column gives the ASCII characters that correspond to the codes.
5. When the printing finishes, turn off the printer.
6. Turn on the printer. Hexadecimal mode is OFF.

Epson TM-T88 Hexadecimal Dump

It may be useful to compare hexadecimal dumps with a known printer, such as the Epson TM-T88. To print a hexadecimal dump on the TM-T88:

1. Make sure the printer is off and open the cover.
2. Hold down the FEED button while you turn on the printer.
3. Close the cover.
4. Run any program the sends data to the printer – the hexadecimal dump will print.
5. Open the cover to set the printer off line so that it will print the last line.
6. Close the cover and turn off the printer or reset it to turn off the hex dump mode.

Cash Drawer

Generate Pulse Command

ESC p m t1 t2

[Name] Generate Pulse

[Format] ASCII ESC p m t1 t2
Hex 1B 70 m t1 t2
Decimal 27 112 m t1 t2

[Range] m = 0, 1, 48, 49
 $0 \leq t1 \leq 255, 0 \leq t2 \leq 255$

[Description] Outputs the pulse specified by t1 & t2 to connector pin m as follows:

m	Connector pin
0,48	Drawer kick-out connector pin 2
0,49	Drawer kick-out connector pin 5

Connection Information

SRP 350 to CRS Cash Drawer (Drawer #1)

SRP 350		CRS Cash Drawer	
Description	Pi	Pin	Description
Frame ground	1	1 (blue)	Frame ground
Drawer kick-out drive signal 1	2	2 (yellow)	Solenoid
Drawer open/close signal	3	3 (green)	Drawer open switch
+24V	4	4 (red)	Solenoid
Drawer kick-out drive signal 2	5	5 (black)	Not used
Signal ground	6	6 (white)	Drawer open switch

The diagram shows the following connections between the SRP 350 and the CRS Cash Drawer:

- SRP 350 Pin 1 (Frame ground) connects to CRS Cash Drawer Pin 1 (blue, Frame ground).
- SRP 350 Pin 2 (Drawer kick-out drive signal 1) connects to CRS Cash Drawer Pin 2 (yellow, Solenoid).
- SRP 350 Pin 3 (Drawer open/close signal) connects to CRS Cash Drawer Pin 3 (green, Drawer open switch).
- SRP 350 Pin 4 (+24V) connects to CRS Cash Drawer Pin 4 (red, Solenoid).
- SRP 350 Pin 5 (Drawer kick-out drive signal 2) is not connected to any pin on the CRS Cash Drawer.
- SRP 350 Pin 6 (Signal ground) connects to CRS Cash Drawer Pin 6 (white, Drawer open switch).

SRP 350 to CRS Cash Drawer (Drawer #2)

SRP 350		CRS Cash Drawer	
Description	Pi	Pin	Description
Frame ground	1	1 (blue)	Frame ground
Drawer kick-out drive signal 1	2	2 (yellow)	Solenoid
Drawer open/close signal	3	3 (green)	Drawer open switch
+24V	4	4 (red)	Solenoid
Drawer kick-out drive signal 2	5	5 (black)	Not used
Signal ground	6	6 (white)	Drawer open switch

The diagram shows the following connections between the SRP 350 and the CRS Cash Drawer:

- SRP 350 Pin 1 (Frame ground) connects to CRS Cash Drawer Pin 1 (blue, Frame ground).
- SRP 350 Pin 2 (Drawer kick-out drive signal 1) connects to CRS Cash Drawer Pin 2 (yellow, Solenoid).
- SRP 350 Pin 3 (Drawer open/close signal) connects to CRS Cash Drawer Pin 3 (green, Drawer open switch).
- SRP 350 Pin 4 (+24V) connects to CRS Cash Drawer Pin 4 (red, Solenoid).
- SRP 350 Pin 5 (Drawer kick-out drive signal 2) is not connected to any pin on the CRS Cash Drawer.
- SRP 350 Pin 6 (Signal ground) connects to CRS Cash Drawer Pin 6 (white, Drawer open switch).

Wall Mount Option

Downloading Procedure for SRP-350 Wall Mount Printer Software

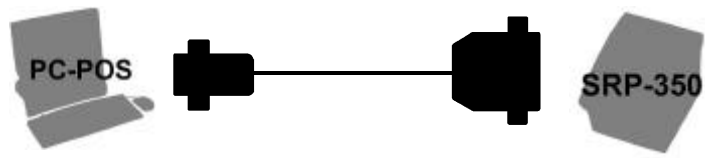
This special software version is for use when wall-mounting the SRP-350 printer. The Paper near end sensor has been disabled in this special version.

Note: Part Number for Wall Mount Bracket is 101218.

1. Turn off the printer.
2. Set the SW2 DIP switch 2-3 to **ON** position.
3. Connect the printer to PC with a standard Parallel printer cable. If using a serial connection use the cable described below.
4. Open the printer cover.
5. Press the paper feed key and turn on the printer while holding down the feed key.
6. Execute the 350loade.exe. You must input the number for type of interface, **3** for parallel (lpt1) downloading.
7. Enter the binary file name you want to download. Example: 350_wall.bin.
8. You should see download status scroll on your PC screen.
9. Download complete.
10. Turn off printer and set SW2 DIP switch 2-3 to **OFF** position.
11. Turn on printer and check version and operation.

PC DB-9F		Printer DB-25M	
DCD	1	1	NC
RXD	2	2	TXD
TXD	3	3	RXD
DTR	4	4	RTS
GND	5	5	CTS
DSR	6	6	DSR
RTS	7	7	GND
CTS	8	8	CD
VCC	9	20	DTR
		22	

Serial Printer Cable



CRS Part No. 250030

Special Application Firmware

Overview

Special application firmware can be downloaded from www.crs-usa.com.

SRP350 version 1.20 Wall

This version is to be used with the WALL MOUNT. Wall mount part number is 101218.

SRP350 version 1.20 Speed

This version is to be used when a faster serial printing is required when using a windows driver.

SRP350 version 1.20 Beep

This version will beep 3 times after each print job.

SRP350 version 1.20 CRLF

This version has an option to automatically add a LF after a CR.