

BIXOLON SAMSUNG USB & LPT Device Driver Installation Manual

Printer Model

**SRP -350/SRP-370
SRP-372/SRP-270
SRP-275/SRP-280
SRP-500/SRP-350F
SRP-350plus**

Contents

- 1. Foreword ... 2**
- 2. Operating Environment ... 2**
- 3. Installing the USB Device Driver ... 3**
 - 3.1 Windows 98/ME ... 3
 - 3.2 Windows 2000 ... 7
 - 3.2 Windows XP/2003 ... 10

1. Foreword

When interface of printer is USB type or “Add new hardware wizard” is pop-up from LPT PnP(plug-and-play), This manual explains how to install the Windows Driver.

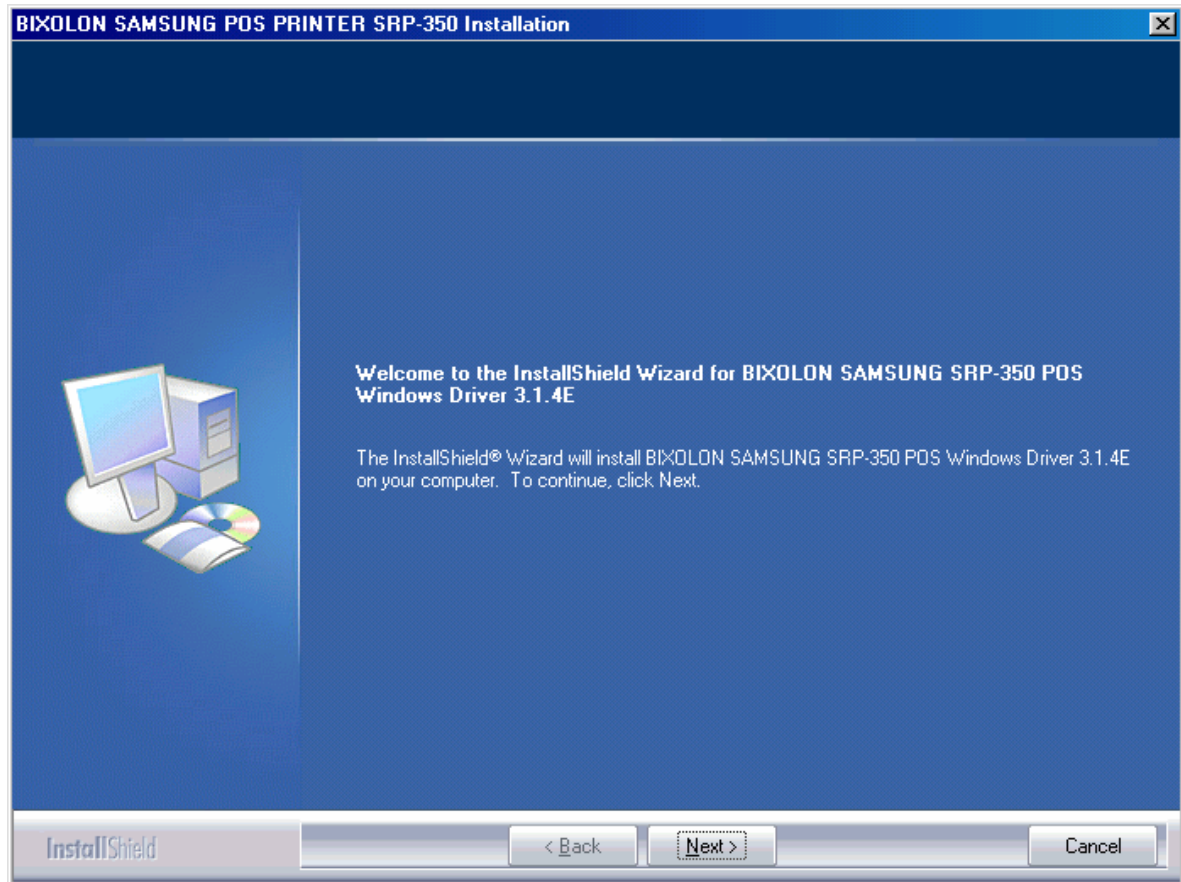
2. Operating Environment

- Microsoft Windows 98 Gold
- Microsoft Windows 98 Second Edition
- Microsoft Windows Millennium Edition
- Microsoft Windows 2000
- Microsoft Windows XP
- Microsoft Windows 2003 Server
- Microsoft Windows Embedded For Point Of Service

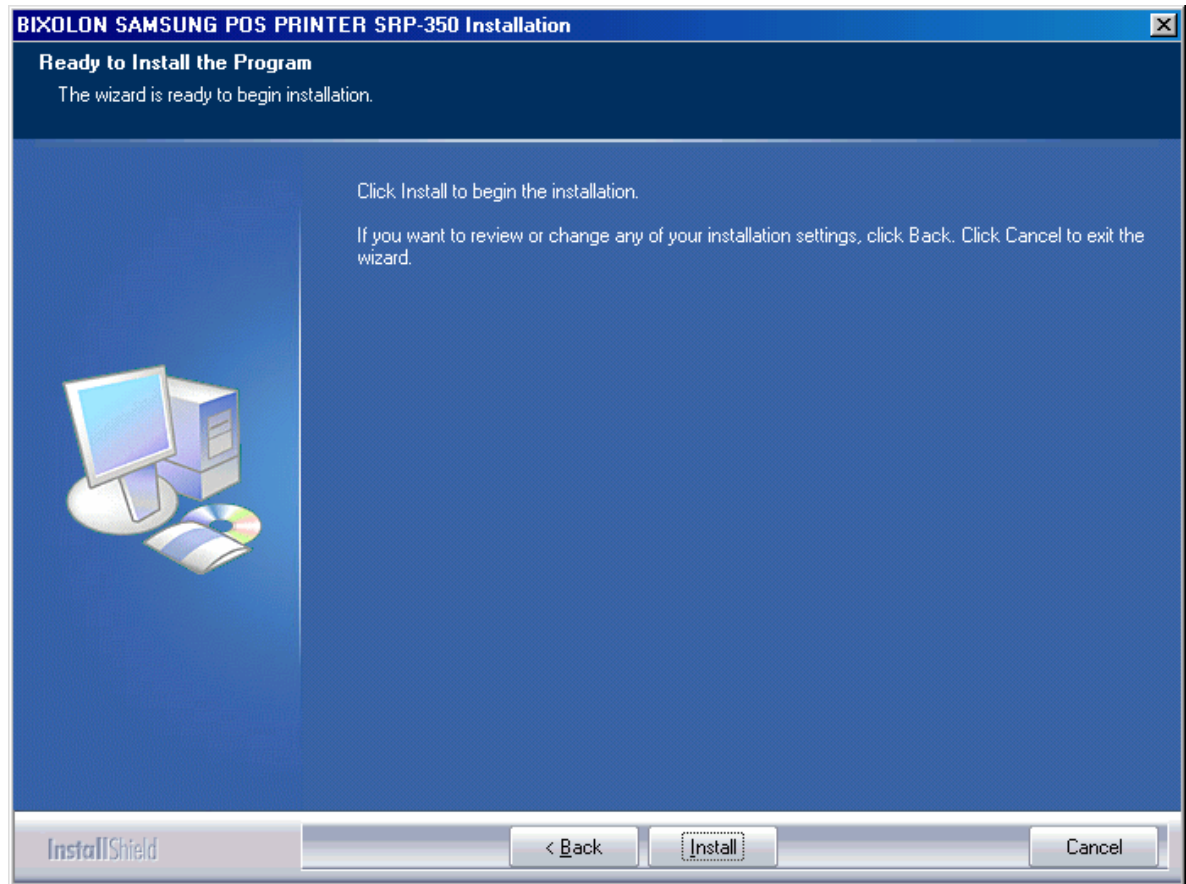
3. Installing the USB Device Driver

3.1 Windows 98/ME

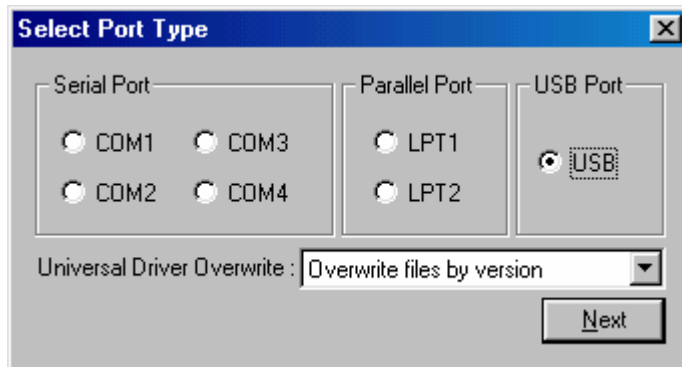
- (1) Double click Installer file.
- (2) Click "Next" Button.



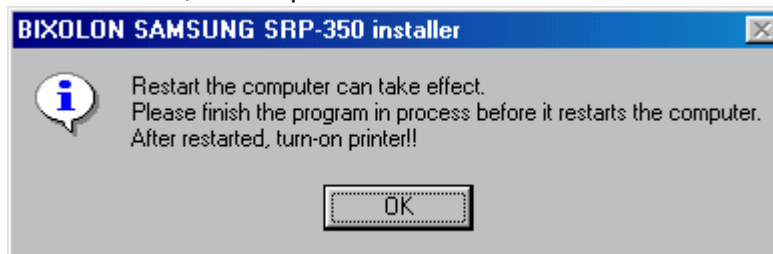
(3) Click "Install" Button.



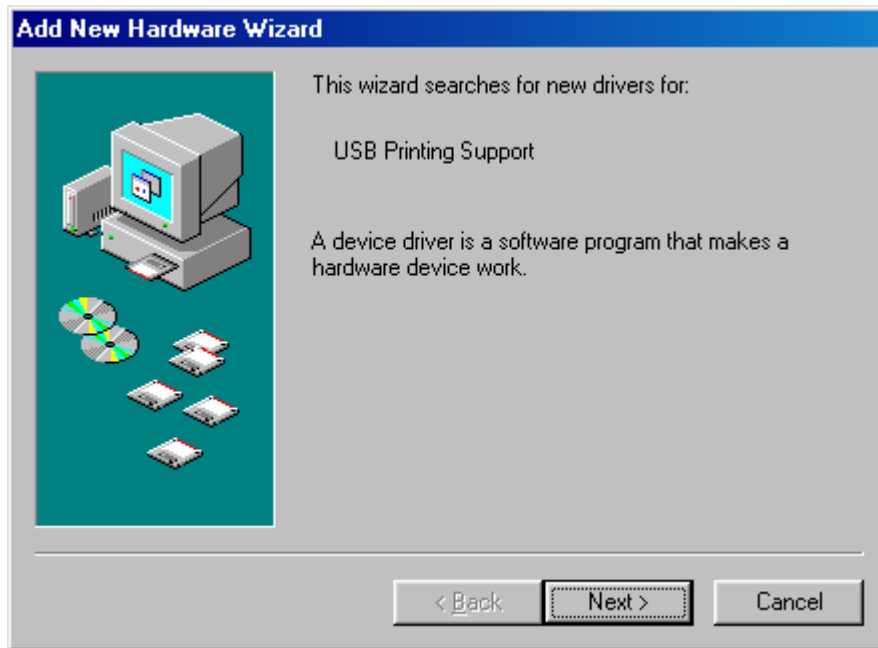
- (4) Select "USB" interface(port) type.



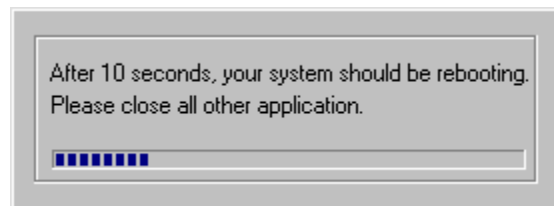
- (5) After restarted, turn-on printer.



- (6) If “Add new hardware wizard” for install “USB print support” driver is pop-up, click “Next” button.



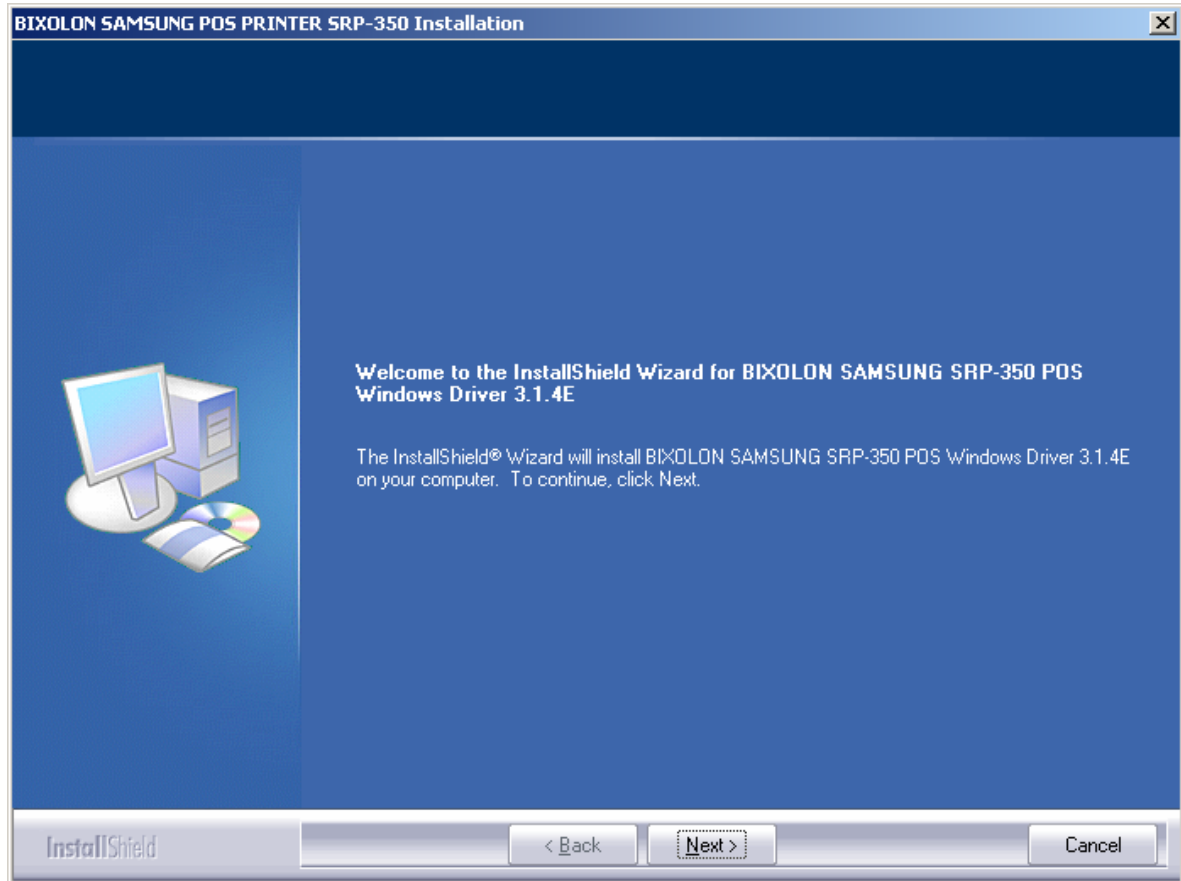
- (7) Please click “Next” button three times.
- (8) When “USB print support” driver has installed, your system automatically restart after 10 seconds.



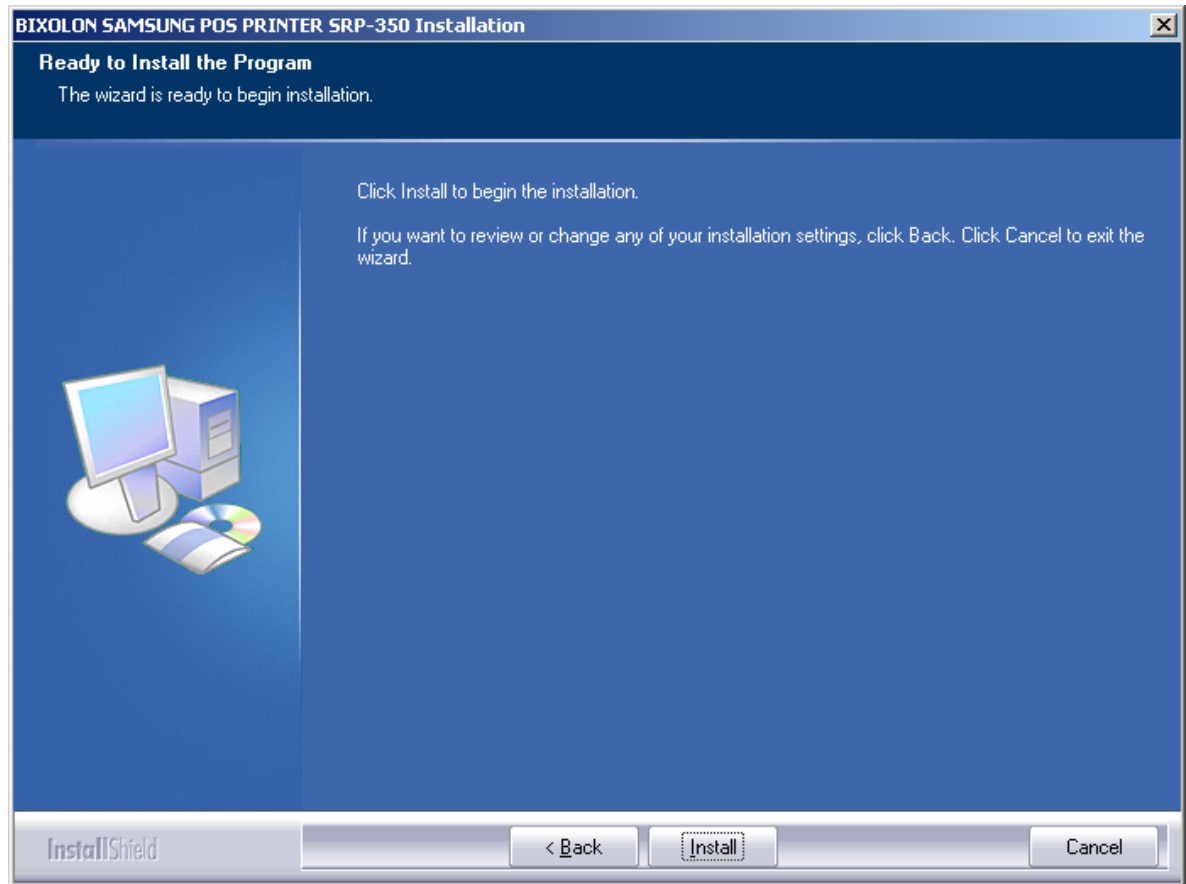
- (9) After “USB print support” driver has installed, printer driver automatically has installed.

3.2 Windows 2000

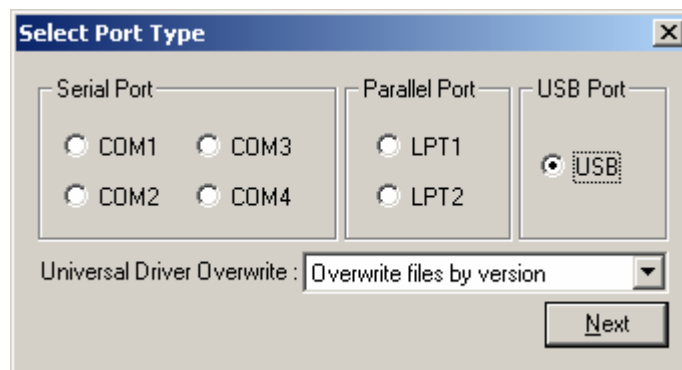
- (1) Double click Installer file.
- (2) Click "Next" Button.



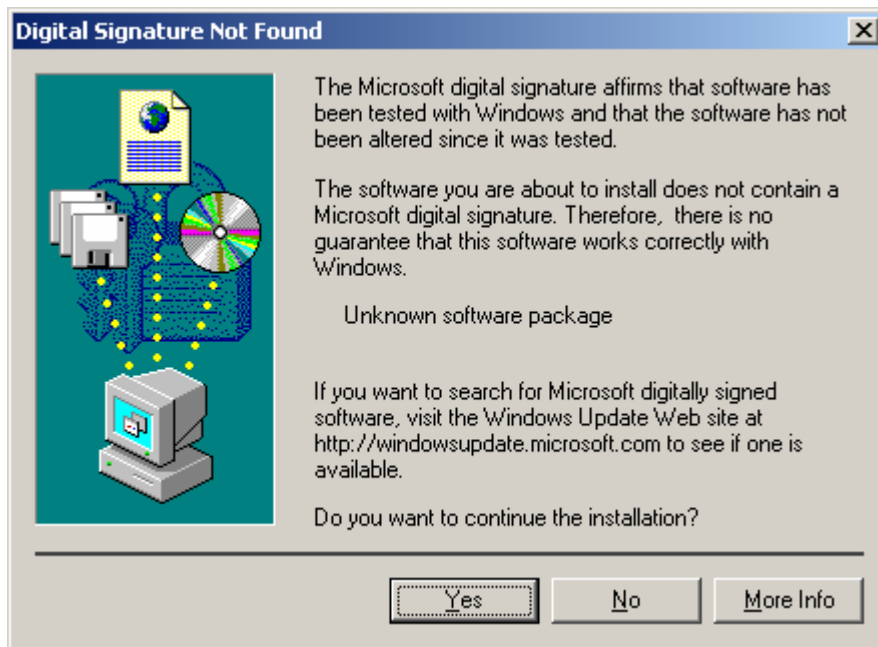
(3) Click "Install" Button.



(4) Select "USB" interface(port) type.



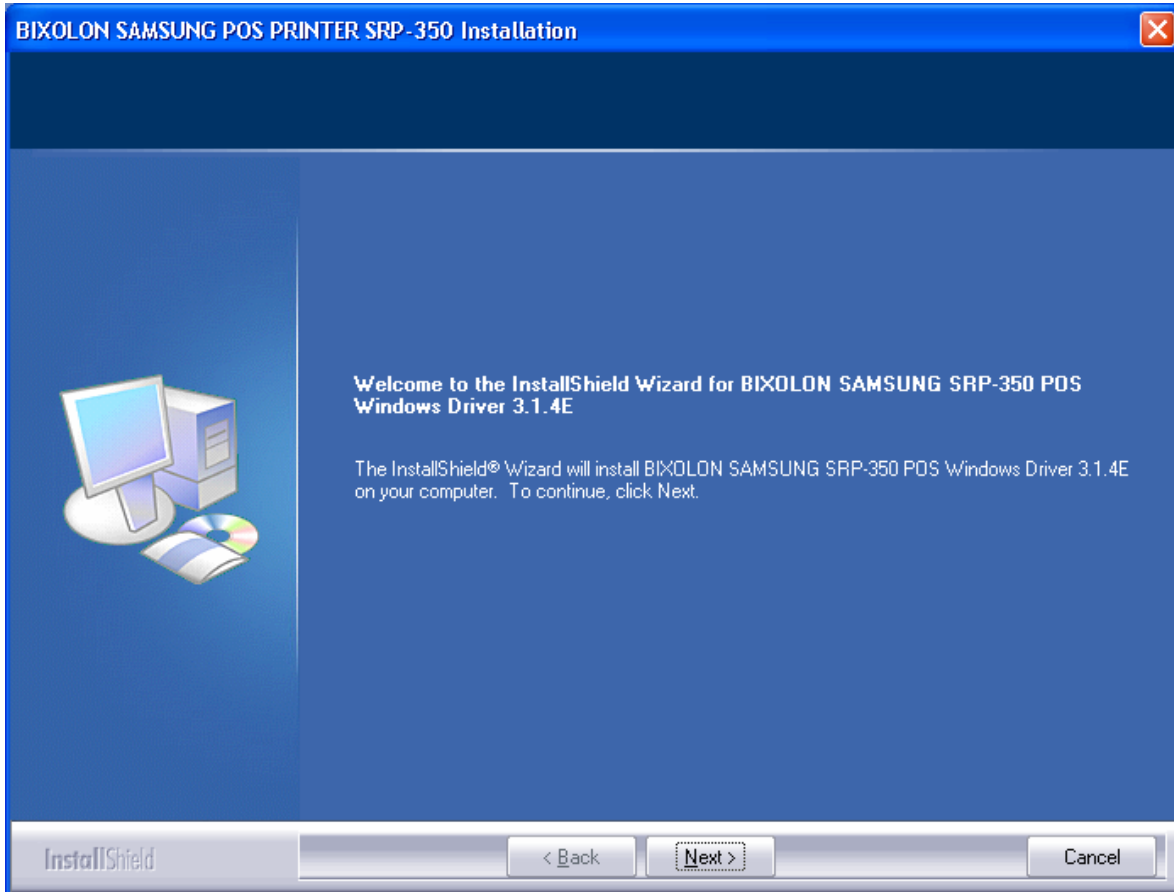
(5) Please turn-off printer and turn-on printer.



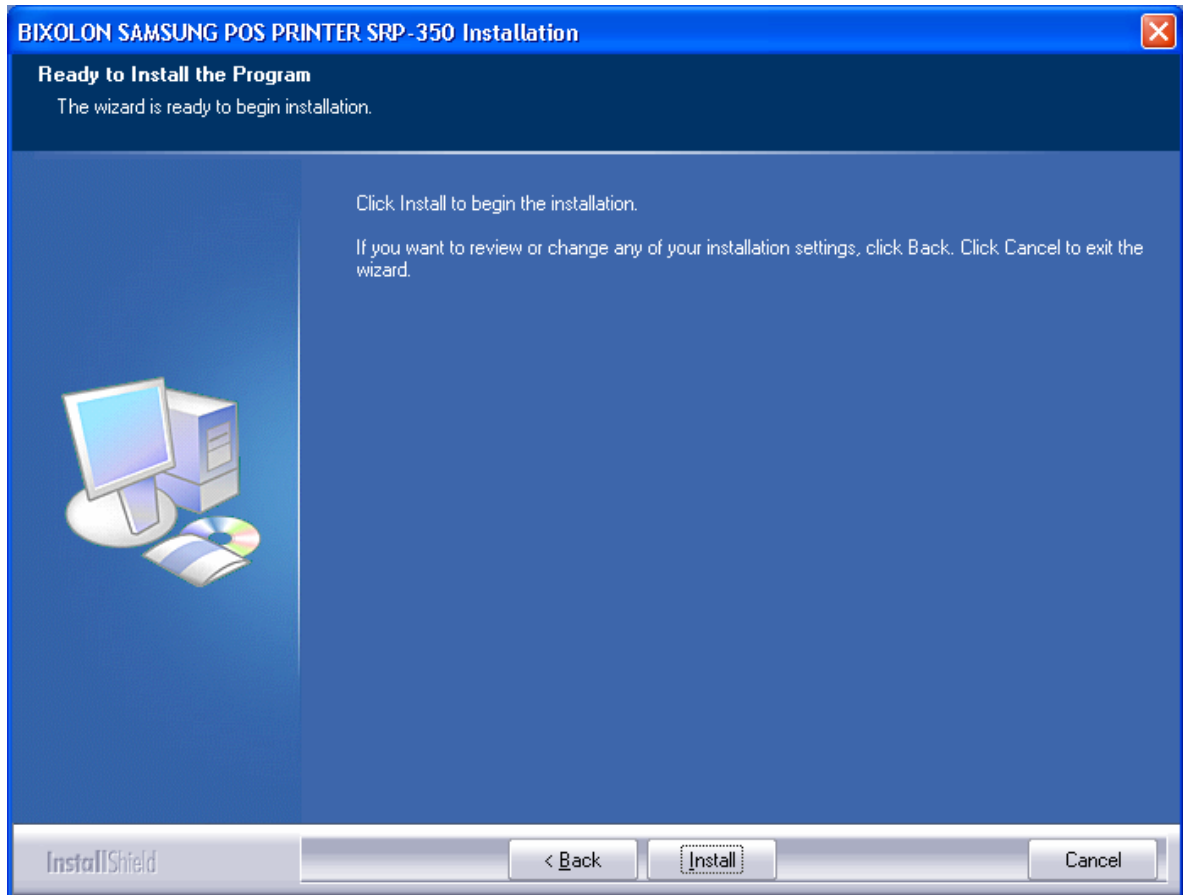
***If you can see this dialog, don't worry comment of dialog.
Printer and driver works well. Please click "Yes" button.**

3.3 Windows XP

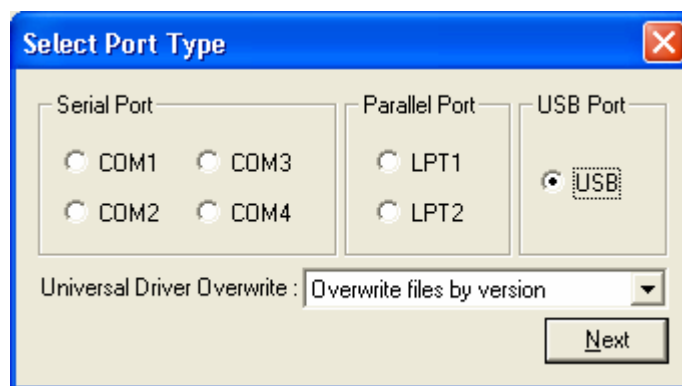
- (1) Double click Installer file.
- (2) Click "Next" Button.



(3) Click "Install" Button.



(4) Select "USB" interface(port) type.

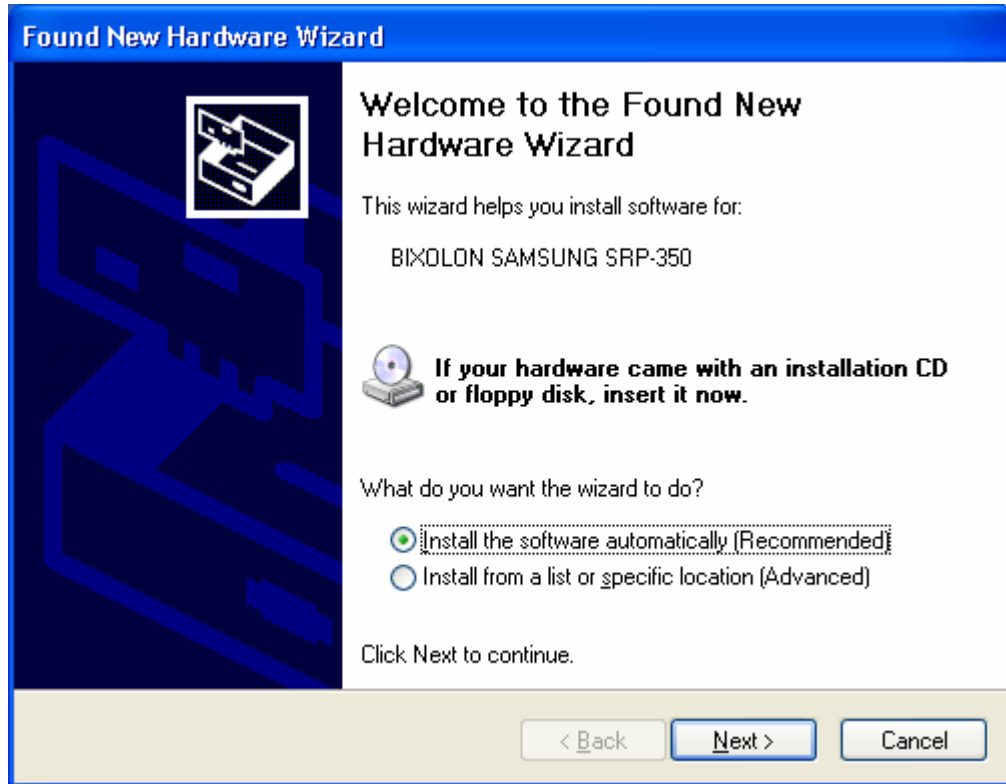


(5) Please turn-off printer and turn-on printer.

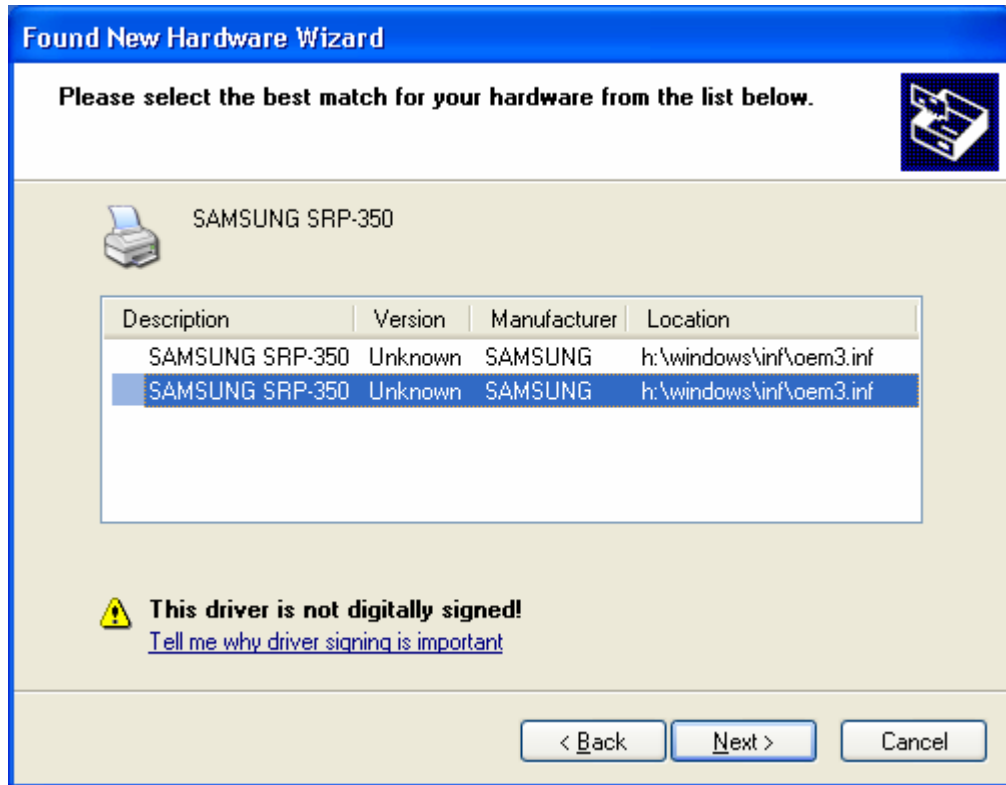


***If you can see this dialog, don't worry comment of dialog.
Printer and driver works well. Please click "Continue Anyway" button.**

- (6) If “Add new hardware wizard” for install driver is pop-up, click “Next” button.



(7) Please click “Next” button until you can see “Finish” button.



***If you can see this dialog, don't worry comment of dialog. Printer and driver works well. Please click "Continue Anyway" button.**

(8) Please click "Finish" button.

